

8

7

6

5

4

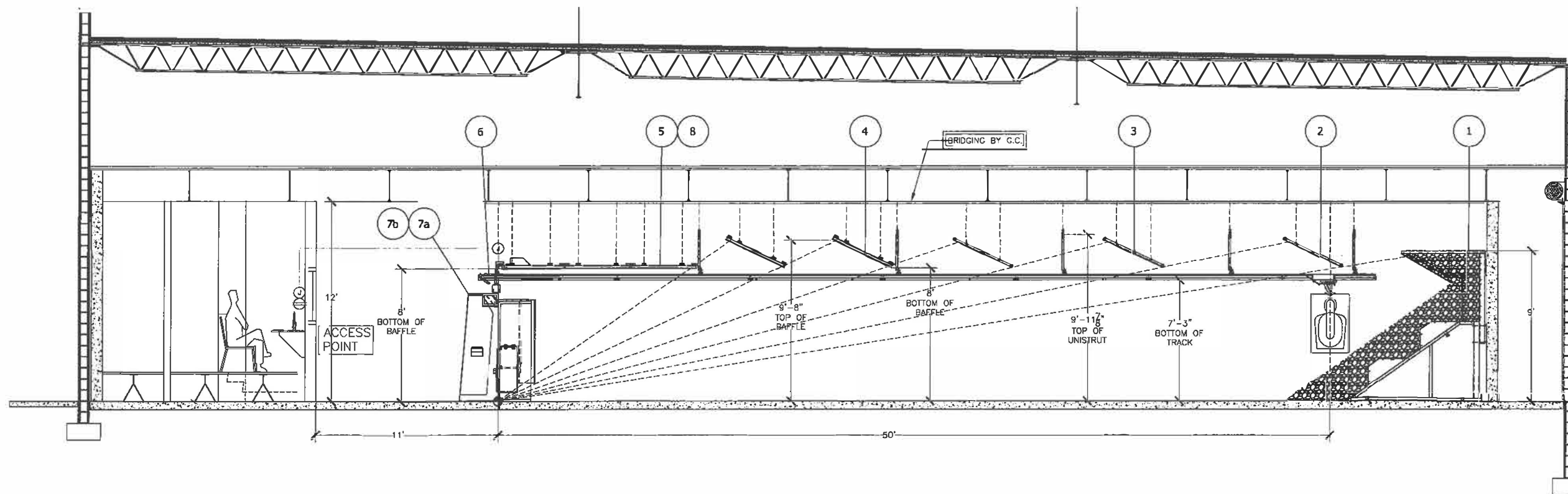
3

2

1

IMPORTANT SAFETY NOTICE

RANGE SAFETY DEPENDS CHIEFLY
UPON RANGE DISCIPLINE. USE OF
EYE AND HEARING PROTECTION
SHOULD BE MANDATORY.



25 YARD BAY

ITEM	DESCRIPTION	QTY.
1.	BULLET TRAP MODEL LE7500-DT	25.8 LFT
2.	REDIRECTIVE GUARD MODEL JR50 3/8 AR500	224 SQFT
3.	REDIRECTIVE GUARD MODEL JR30C 1/4 AR500	112 SQFT
4.	CONTAINMENT BAFFLE MODEL J44C 1/4 AR500	224 SQFT
5.	SAFETY CEILING MODEL JG12C 1/4 AR500	336 SQFT
6.	WIRELESS TARGET SYSTEM MODEL XWT-50 GEN 3 W/TRACS	6 INCH
7.	PHOENIX SHOOTING STALLS 7a. MODEL BV10EC CENTERS 7b. MODEL BV3/4U ENDS	5 EACH 1 SET
8.	TROY ACOUSTIC PANELS (NOT SHOWN)	1 LOT

CUSTOMER ACKNOWLEDGMENTS

NOTES:

- ALL CONDUIT, A.C. WIRING, A.C. ELECTRICAL HOOK UP, CONTROL WIRE CONDUITS, LIGHTING, LIGHTING CONTROLS OR INTERFACES BY G.C.
- ANY ACOUSTICAL MATERIALS/TREATMENTS NOT SHOWN BY G.C.
- ALL CONCRETE ANCHORS AND TIES BY MTSI.
- WALLS AND FLOORS IN TRAP AREA MUST BE FLAT WITH NO DEPRESSIONS.
- G.C. TO VERIFY THAT MTSI'S EQUIPMENT AS SHOWN, DOES NOT CONFLICT WITH DUCTWORK, PIPES, AND OTHER TRADES.
- UNLOADING AND INSTALLATION OF SHOOTING RANGE EQUIPMENT BY MTSI.

THE EQUIPMENT BALLISTIC INTEGRITY MUST TAKE PRIORITY OVER ALL WORK WITHIN THIS SPACE. IT IS THE GENERAL CONTRACTOR'S RESPONSIBILITY TO COORDINATE WITH OTHER TRADES - NOT TO INTERFERE WITH RANGE EQUIPMENT LOCATIONS, SUSPENSION LOCATIONS AND OTHER RANGE EQUIPMENT LOCATIONS AND REQUIRED ACCESS AREAS.

G.C./CUSTOMER TO SIGN: *[Signature]* DATE: 8-15-16

MEGGITT TRAINING SYSTEMS REQUIRES THE G.C./CUSTOMER TO VERIFY THE DIMENSION AS NOTED ON THE DRAWING. MEGGITT TRAINING SYSTEMS WILL BUILD OUR EQUIPMENT TO MATCH THE DIMENSION DATA AS SHOWN. MEGGITT TRAINING SYSTEMS RESERVES THE RIGHT TO SEEK ADDITIONAL CHARGES IF THE BUILDING SPACE IS DIFFERENT FROM THE DIMENSIONAL DATA AS SHOWN ON OUR DRAWINGS.

G.C./CUSTOMER TO SIGN: *[Signature]* DATE: 8-15-16

ALL DRAWINGS SPECIFICATIONS AND OTHER DESIGN DOCUMENTS PREPARED BY MEGGITT TRAINING SYSTEMS AND ITS CONSULTANTS IN CONNECTION WITH THE PROJECT ARE THE PROPERTY OF MTSI. MTSI SHALL RETAIN ALL COMMON LAW, STATUTORY AND OTHER RIGHTS, INCLUDING ALL COPYRIGHT, RELATED TO SAID DESIGN DOCUMENTS. THE GENERAL CONTRACTOR OR CUSTOMER SHALL NOT USE THE DESIGN DOCUMENTS ON OTHER PROJECTS WITHOUT THE SPECIFIC WRITTEN CONSENT OF MEGGITT TRAINING SYSTEMS.

G.C./CUSTOMER TO SIGN: *[Signature]* DATE: 8-15-16

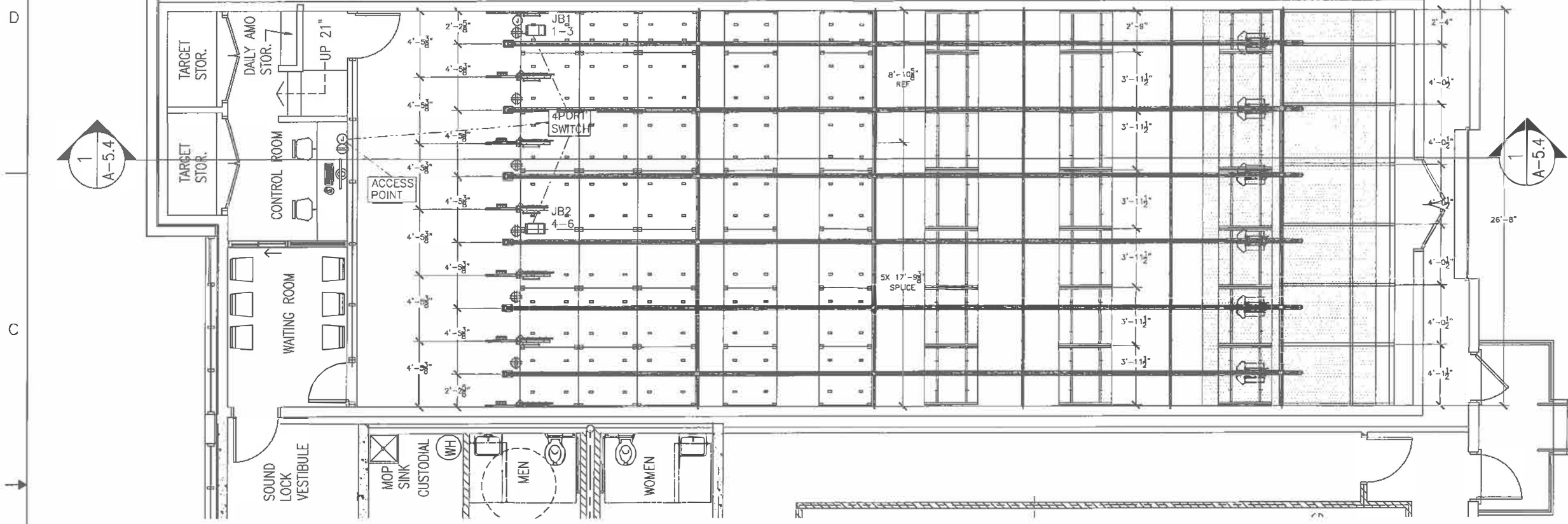
IT IS THE CUSTOMER'S RESPONSIBILITY TO VERIFY THE STRUCTURAL INTEGRITY OF THE BUILDINGS CEILINGS AND WALLS ABILITY TO SUPPORT THE ADDITIONAL LOAD OF THE RANGE EQUIPMENT PROVIDED BY MEGGITT TRAINING SYSTEMS, INC. CUSTOMER TO VERIFY THAT MTSI EQUIPMENT AS SHOWN DOES NOT CONFLICT WITH DUCT WORK, PIPES AND/OR OTHER TRADES.

G.C./CUSTOMER TO SIGN: *[Signature]* DATE: 8-15-16

REVISION	UPDATED:BAR JOIST CEILING AND BRIDGING.	08.20.16	SBA
DESIGNED BY	SSA	DATE	SIGN
PROJECT MANAGER	TM		
DATE	08.13.16		
MEGGITT Meggit Training Systems, Inc. 296 Bryndon Rd, Suwanee GA 30024, USA			
HILLSBOROUGH COUNTY 50' RANGE SECTION VIEW			
REV.	DATE	SCALE	PROJECT NO.
1	08/15/16	NTS	US5998
SHEET 1			REV B

8 7 6 5 4 3 2 1

IMPORTANT SAFETY NOTICE
RANGE SAFETY DEPENDS CHIEFLY
UPON RANGE DISCIPLINE. USE OF
EYE AND HEARING PROTECTION
SHOULD BE MANDATORY.



CUSTOMER ACKNOWLEDGMENTS

- NOTES:**
1. ALL CONDUIT, A.C. WIRING, A.C. ELECTRICAL HOOK UP, CONTROL WIRE CONDUITS, LIGHTING, LIGHTING CONTROLS OR INTERFACES BY G.C.
 2. ANY ACOUSTICAL MATERIALS/TREATMENTS NOT SHOWN BY G.C.
 3. ALL CONCRETE ANCHORS AND TIES BY MTSI.
 4. WALLS AND FLOORS IN TRAP AREA MUST BE FLAT WITH NO DEPRESSIONS.
 5. G.C. TO VERIFY THAT MTSI'S EQUIPMENT AS SHOWN, DOES NOT CONFLICT WITH DUCTWORK, PIPES, AND OTHER TRADES.
 6. UNLOADING AND INSTALLATION OF SHOOTING RANGE EQUIPMENT BY MTSI.

THE EQUIPMENT BALLISTIC INTEGRITY MUST TAKE PRIORITY OVER ALL WORK WITHIN THIS SPACE. IT IS THE GENERAL CONTRACTORS RESPONSIBILITY TO COORDINATE WITH OTHER TRADES - NOT TO INTERFERE WITH RANGE EQUIPMENT LOCATIONS, SUSPENSION LOCATIONS AND OTHER RANGE EQUIPMENT LOCATIONS AND REQUIRED ACCESS AREAS.

G.C./CUSTOMER TO SIGN: *[Signature]* DATE: 8-15-16

MEGGITT TRAINING SYSTEMS REQUIRES THE G.C./CUSTOMER TO VERIFY THE DIMENSION AS NOTED ON THE DRAWING. MEGGITT TRAINING SYSTEMS WILL BUILD OUR EQUIPMENT TO MATCH THE DIMENSION DATA AS SHOWN. MEGGITT TRAINING SYSTEMS RESERVES THE RIGHT TO SEEK ADDITIONAL CHARGES IF THE BUILDING SPACE IS DIFFERENT FROM THE DIMENSIONAL DATA AS SHOWN ON OUR DRAWING.

G.C./CUSTOMER TO SIGN: *[Signature]* DATE: 8-15-16

ALL DRAWINGS SPECIFICATIONS AND OTHER DESIGN DOCUMENTS PREPARED BY MEGGITT TRAINING SYSTEMS AND ITS CONSULTANTS IN CONNECTION WITH THE PROJECT ARE THE PROPERTY OF MTSI. MTSI SHALL RETAIN ALL COMMON LAW, STATUTORY AND OTHER RIGHTS, INCLUDING ALL COPYRIGHT, RELATED TO SAID DESIGN DOCUMENTS. THE GENERAL CONTRACTOR OR CUSTOMER SHALL NOT USE THE DESIGN DOCUMENTS ON OTHER PROJECTS WITHOUT THE SPECIFIC WRITTEN CONSENT OF MEGGITT TRAINING SYSTEMS.

G.C./CUSTOMER TO SIGN: *[Signature]* DATE: 8-15-16

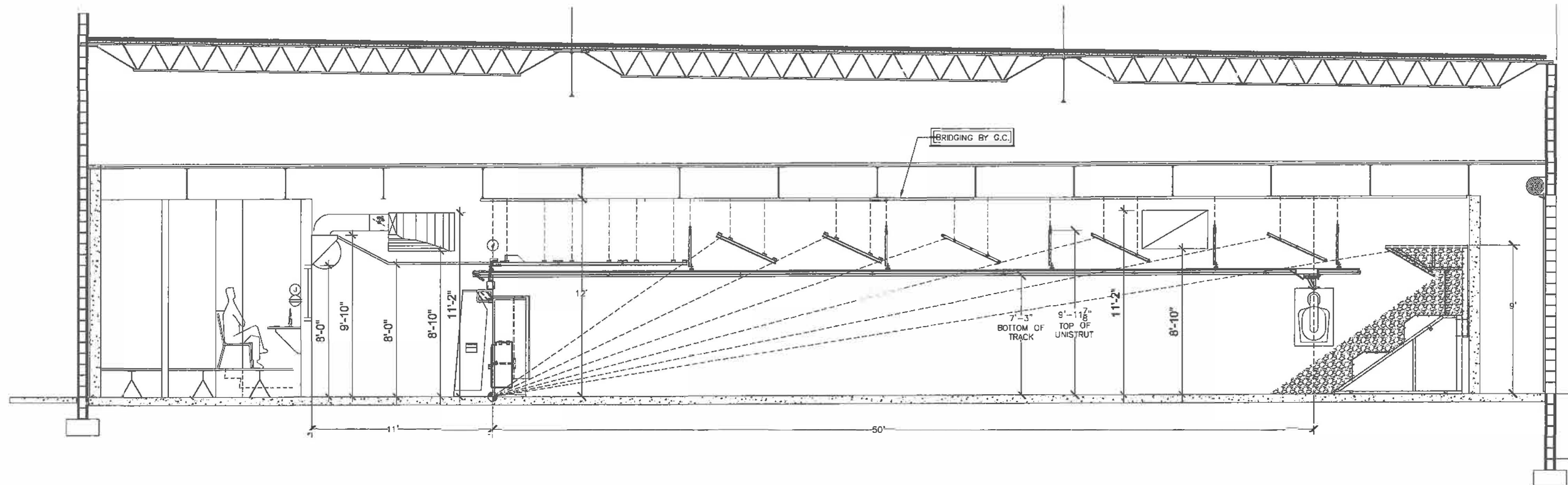
IT IS THE CUSTOMER'S RESPONSIBILITY TO VERIFY THE STRUCTURAL INTEGRITY OF THE BUILDINGS CEILINGS AND WALLS ABILITY TO SUPPORT THE ADDITIONAL LOAD OF THE RANGE EQUIPMENT PROVIDED BY MEGGITT TRAINING SYSTEMS, INC. CUSTOMER TO VERIFY THAT MTSI EQUIPMENT AS SHOWN DOES NOT CONFLICT WITH DUCT WORK, PIPES AND/OR OTHER TRADES.

G.C./CUSTOMER TO SIGN: *[Signature]* DATE: 8-15-16

REVISION	SEE SHEET 1.	08.20.16	SBA
DATE	DESCRIPTION	DATE	SIGN
06.13.16	04		
MEGGITT			
Meggit Training Systems, Inc.			
285 Broughton Rd. Suwanee GA 30024, USA			
HILLSBOROUGH COUNTY			
50' RANGE			
PLAN VIEW			
REV	SIZE	CAGE CODE	SCALE
AJ	E1	087W6	NTS
PROJECT NO.			REV
US5998			B
SHEET			2
FILENAME: HILLSBOROUGH COUNTY PG			
Jun 20, 2016 - 3:58pm - wfm			

Doc File: U:\Directory\Operations\Baird\Development\ACTIVE\JMS\US5998 - HILLSBOROUGH COUNTY SHERIFF\US5998-HILLSBOROUGH COUNTYPG.dwg

IMPORTANT SAFETY NOTICE
RANGE SAFETY DEPENDS CHIEFLY
UPON RANGE DISCIPLINE. USE OF
EYE AND HEARING PROTECTION
SHOULD BE MANDATORY.



THE EQUIPMENT BALLISTIC INTEGRITY MUST TAKE PRIORITY OVER ALL WORK WITHIN THIS SPACE. IT IS THE GENERAL CONTRACTORS RESPONSIBILITY TO COORDINATE WITH OTHER TRADES - NOT TO INTERFERE WITH RANGE EQUIPMENT LOCATIONS, SUSPENSION LOCATIONS AND OTHER RANGE EQUIPMENT LOCATIONS AND REQUIRED ACCESS AREAS.

G.C./CUSTOMER TO SIGN: *[Signature]* DATE: 8-15-16

MEGGITT TRAINING SYSTEMS REQUIRES THE G.C./CUSTOMER TO VERIFY THE DIMENSION AS NOTED ON THE DRAWING. MEGGITT TRAINING SYSTEMS WILL BUILD OUR EQUIPMENT TO MATCH THE DIMENSION DATA AS SHOWN. MEGGITT TRAINING SYSTEMS RESERVES THE RIGHT TO SEEK ADDITIONAL CHARGES IF THE BUILDING SPACE IS DIFFERENT FROM THE DIMENSIONAL DATA AS SHOWN ON OUR DRAWINGS.

G.C./CUSTOMER TO SIGN: *[Signature]* DATE: 8-15-16

ALL DRAWINGS SPECIFICATIONS AND OTHER DESIGN DOCUMENTS PREPARED BY MEGGITT TRAINING SYSTEMS AND ITS CONSULTANTS IN CONNECTION WITH THE PROJECT ARE THE PROPERTY OF MTSI. MTSI SHALL RETAIN ALL COMMON LAW, STATUTORY AND OTHER RIGHTS, INCLUDING ALL COPYRIGHT, RELATED TO SAID DESIGN DOCUMENTS. THE GENERAL CONTRACTOR OR CUSTOMER SHALL NOT USE THE DESIGN DOCUMENTS ON OTHER PROJECTS WITHOUT THE SPECIFIC WRITTEN CONSENT OF MEGGITT TRAINING SYSTEMS.

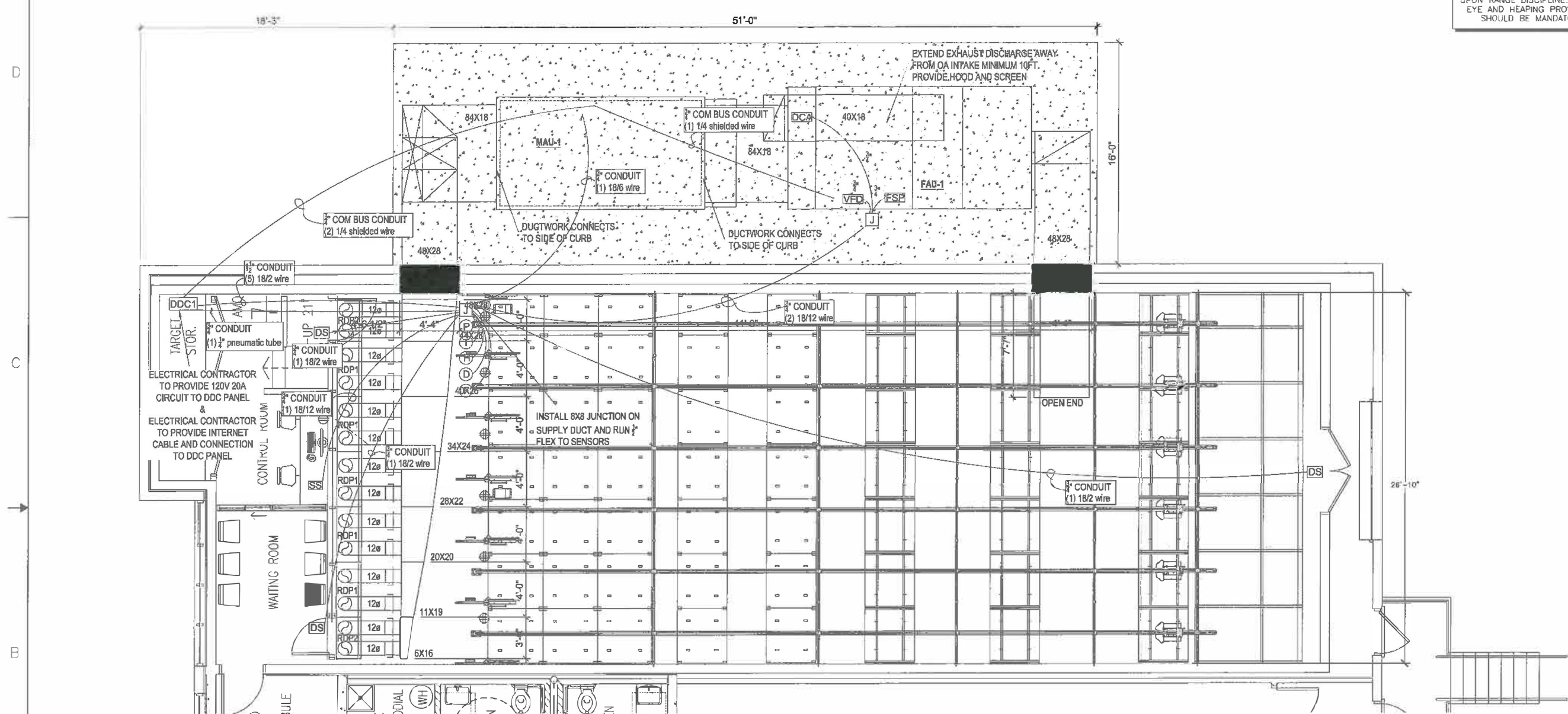
G.C./CUSTOMER TO SIGN: *[Signature]* DATE: 8-15-16

IT IS THE CUSTOMER'S RESPONSIBILITY TO VERIFY THE STRUCTURAL INTEGRITY OF THE BUILDINGS CEILINGS AND WALLS ABILITY TO SUPPORT THE ADDITIONAL LOAD OF THE RANGE EQUIPMENT PROVIDED BY MEGGITT TRAINING SYSTEMS, INC. CUSTOMER TO VERIFY THAT MTSI EQUIPMENT AS SHOWN DOES NOT CONFLICT WITH DUCT WORK, PIPES AND/OR OTHER TRADES.

G.C./CUSTOMER TO SIGN: *[Signature]* DATE: 8-15-16

REVISION	UPDATED: BAR JOIST CEILING AND BRIDGING.	05.20.16	SBA
DESIGNED BY	SBA	DATE	SIGN
PROJECT MANAGER	TW		
DATE	08.13.16		
MEGGITT Meggit Training Systems, Inc. 295 Bragdon Rd. Suwanee GA 30024, USA			
HILLSBOROUGH COUNTY 50' RANGE HVAC - SECTION VIEW			
SIZE	E1	SCALE	NTS
PROJECT NO.	US5998	REV	B
FILENAME	HILLSBOROUGH COUNTY PD	SHEET	4

IMPORTANT SAFETY NOTICE
RANGE SAFETY DEPENDS CHIEFLY
UPON RANGE DISCIPLINE. USE OF
EYE AND HEARING PROTECTION
SHOULD BE MANDATORY.



THE EQUIPMENT BALLISTIC INTEGRITY MUST TAKE PRIORITY OVER ALL WORK WITHIN THIS SPACE. IT IS THE GENERAL CONTRACTOR'S RESPONSIBILITY TO COORDINATE WITH OTHER TRADES - NOT TO INTERFERE WITH RANGE EQUIPMENT LOCATIONS, SUSPENSION LOCATIONS AND OTHER RANGE EQUIPMENT LOCATIONS AND REQUIRED ACCESS AREAS.
G.C./CUSTOMER TO SIGN: *[Signature]* DATE: 8-15-16

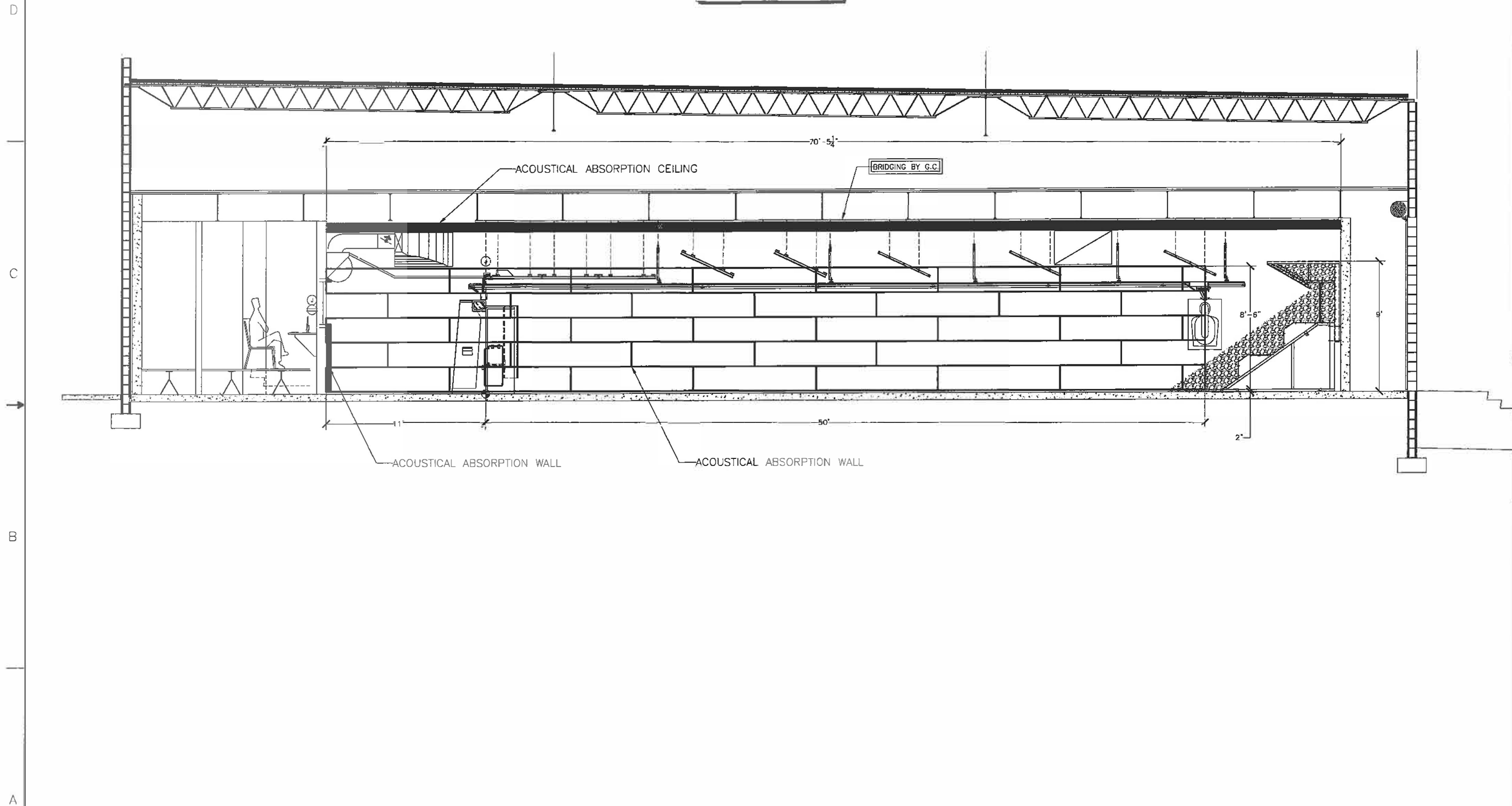
MEGGITT TRAINING SYSTEMS REQUIRES THE G.C./CUSTOMER TO VERIFY THE DIMENSION AS NOTED ON THE DRAWING. MEGGITT TRAINING SYSTEMS WILL BUILD OUR EQUIPMENT TO MATCH THE DIMENSION DATA AS SHOWN. MEGGITT TRAINING SYSTEMS RESERVES THE RIGHT TO SEEK ADDITIONAL CHARGES IF THE BUILDING SPACE IS DIFFERENT FROM THE DIMENSIONAL DATA AS SHOWN ON OUR DRAWINGS.
G.C./CUSTOMER TO SIGN: *[Signature]* DATE: 8-15-16

ALL DRAWINGS SPECIFICATIONS AND OTHER DESIGN DOCUMENTS PREPARED BY MEGGITT TRAINING SYSTEMS AND ITS CONSULTANTS IN CONNECTION WITH THE PROJECT ARE THE PROPERTY OF MTSI. MTSI SHALL RETAIN ALL COMMON LAW, STATUTORY AND OTHER RIGHTS, INCLUDING ALL COPYRIGHT, RELATED TO SAID DESIGN DOCUMENTS. THE GENERAL CONTRACTOR OR CUSTOMER SHALL NOT USE THE DESIGN DOCUMENTS ON OTHER PROJECTS WITHOUT THE SPECIFIC WRITTEN CONSENT OF MEGGITT TRAINING SYSTEMS.
G.C./CUSTOMER TO SIGN: *[Signature]* DATE: 8-15-16

IT IS THE CUSTOMER'S RESPONSIBILITY TO VERIFY THE STRUCTURAL INTEGRITY OF THE BUILDINGS CEILINGS AND WALLS ABILITY TO SUPPORT THE ADDITIONAL LOAD OF THE RANGE EQUIPMENT PROVIDED BY MEGGITT TRAINING SYSTEMS, INC. CUSTOMER TO VERIFY THAT MTSI EQUIPMENT AS SHOWN DOES NOT CONFLICT WITH DUCT WORK, PIPE AND/OR OTHER TRADES.
G.C./CUSTOMER TO SIGN: *[Signature]* DATE: 8-15-16

U	SEE SHEET 1.	06.20.16	SBA
REVISION	DESCRIPTION	DATE	SIGN
DESIGN BY	SBA		
PROJECT MANAGER	TH		
DATE	08.18.16		
MEGGITT Meggit Training Systems, Inc 296 Brogdon Rd, Suwanee GA 30024, USA			
HILLSBOROUGH COUNTY 50' RANGE HVAC - PLAN VIEW			
SIZE	E1	CAGE CODE	087W5
SCALE	NTS	PROJECT NO.	US5998
REV.	AJ	FILENAME: HILLSBOROUGH COUNTY PD	SHEET 5

IMPORTANT SAFETY NOTICE
RANGE SAFETY DEPENDS CHIEFLY
UPON RANGE DISCIPLINE. USE OF
EYE AND HEARING PROTECTION
SHOULD BE MANDATORY.



THE EQUIPMENT BALLISTIC INTEGRITY MUST TAKE PRIORITY OVER ALL WORK WITHIN THIS SPACE. IT IS THE GENERAL CONTRACTORS RESPONSIBILITY TO COORDINATE WITH OTHER TRADES - NOT TO INTERFERE WITH RANGE EQUIPMENT LOCATIONS, SUSPENSION LOCATIONS AND OTHER RANGE EQUIPMENT LOCATIONS AND REQUIRED ACCESS AREAS.

G.C./CUSTOMER TO SIGN: *[Signature]* DATE: 8-15-16

MEGGITT TRAINING SYSTEMS REQUIRES THE G.C./CUSTOMER TO VERIFY THE DIMENSION AS NOTED ON THE DRAWING. MEGGITT TRAINING SYSTEMS WILL BUILD OUR EQUIPMENT TO MATCH THE DIMENSION DATA AS SHOWN. MEGGITT TRAINING SYSTEMS RESERVES THE RIGHT TO SEEK ADDITIONAL CHARGES IF THE BUILDING SPACE IS DIFFERENT FROM THE DIMENSIONAL DATA AS SHOWN ON OUR DRAWINGS.

G.C./CUSTOMER TO SIGN: *[Signature]* DATE: 8-15-16

ALL DRAWINGS SPECIFICATIONS AND OTHER DESIGN DOCUMENTS PREPARED BY MEGGITT TRAINING SYSTEMS AND ITS CONSULTANTS IN CONNECTION WITH THE PROJECT ARE THE PROPERTY OF MTSI. MTSI SHALL RETAIN ALL COMMON LAW, STATUTORY AND OTHER RIGHTS, INCLUDING ALL COPYRIGHT, RELATED TO SAID DESIGN DOCUMENTS. THE GENERAL CONTRACTOR OR CUSTOMER SHALL NOT USE THE DESIGN DOCUMENTS ON OTHER PROJECTS WITHOUT THE SPECIFIC WRITTEN CONSENT OF MEGGITT TRAINING SYSTEMS.

G.C./CUSTOMER TO SIGN: *[Signature]* DATE: 8-15-16

IT IS THE CUSTOMER'S RESPONSIBILITY TO VERIFY THE STRUCTURAL INTEGRITY OF THE BUILDINGS CEILINGS AND WALLS ABILITY TO SUPPORT THE ADDITIONAL LOAD OF THE RANGE EQUIPMENT PROVIDED BY MEGGITT TRAINING SYSTEMS, INC. CUSTOMER TO VERIFY THAT MTSI EQUIPMENT AS SHOWN DOES NOT CONFLICT WITH DUCT WORK, PIPES AND/OR OTHER TRADES.

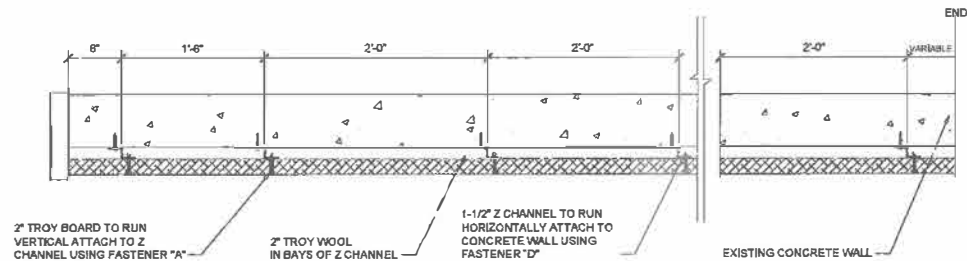
G.C./CUSTOMER TO SIGN: *[Signature]* DATE: 8-15-16

B		UPDATED-BAR JOIST CEILING AND BRIDGING.		06.20.16	SBA
REVISION		DESCRIPTION		DATE	SIGN
DRAWN BY		SBA			
PROJECT MANAGER		TM			
DATE		08.15.16			
MEGGITT Meggit Training Systems, Inc. 296 Bragdon Rd., Suwanee GA 30024, USA					
HILLSBOROUGH COUNTY 50' RANGE TROY - SECTION VIEW					
REV	DATE	SIZE	CAGE CODE	SCALE	PROJECT NO.
AJ		E1	087W6	NTS	US5998
FILENAME: HILLSBOROUGH COUNTY PD					SHEET 6

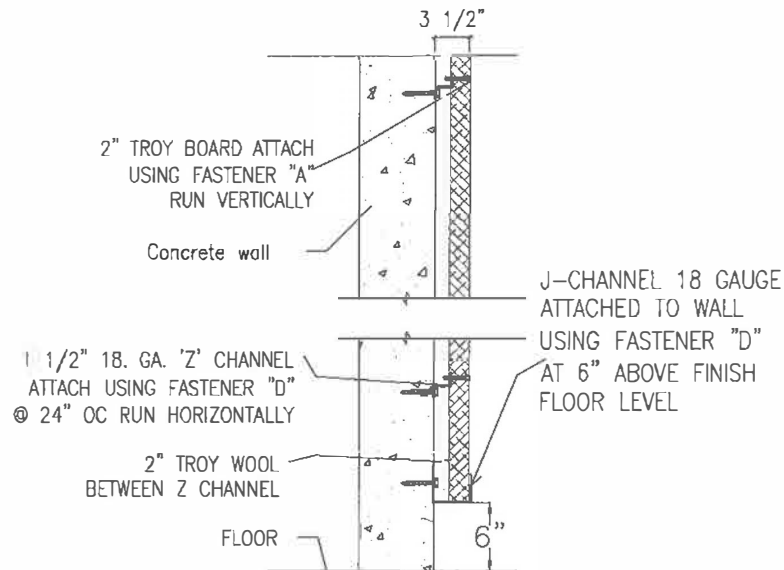
Wall Install Procedure (Troy Board HORIZONTAL finish)

* Note if "J-channel" is called out, it should be installed before furring channels in the same method.

1. On the sidewalls and starting from left to right, lay out for the furring channel will run VERTICAL. Spacing for furring strips is 2' o.c. Start layout at 6" from floor, or start of treatment, for first furring channel. Then follow spacing of 2' o.c. Attachment of furring channel to wall is per detail provided. The furring channels are attached to all walls to be covered with Troy System.
2. Attachment of 2" Troy Wool to wall surface using a spray adhesive (3M-90 or equal). The spray adhesive is to hold the Troy Wool in place until the Troy Board material is attached. The 2" width of the Troy Wool should fit snug in the bays of the furring channel. Use a 10" serrated bread knife to cut the Troy Wool. Cover entire designated surface with Troy Wool.
3. Start layout of Troy Board perpendicular to furring channel. Start the first course with the end (2' width side) of Troy Board flush against wall and the top side of Troy Board MUST BE LEVEL. DO NOT RELY ON FLOOR TO BE LEVEL. All cuts will be on floor side, thus leaving factory side for second course to set upon. DO NOT INSTALL CUT SIDE UP. Using the supplied Troy Board fasteners, attach Troy Board to furring strips with fasteners every 3" from all edges and side. Field placement is at every furring element in a straight line. There are typically 10 fasteners per Troy Board. Troy Board is a finish acoustic material. Make sure joints are tight. Troy Board is to be installed without edges damaged. Troy Board may be cut using a circular saw, hand saw, or reciprocating saw type. The Troy Board is manufactured with Portland cement; thereby dust will be created when using a circular saw.
4. The Troy Board material is 7'-10 $\frac{1}{2}$ " long and WILL NOT fall on lay out of the furring strips. Therefore, attach two (2) additional furring strips, no longer than 8" ea, to wall surface located at end of Troy Board. These furring channels will keep the Troy Board flat and even from end to end. Spacing of furring channels at end of Troy Boards are to be at least 16" apart from each other, with 4" under the Troy Board just installed, and the other 4" is for the attachment of the next Troy Board.
5. Continue installation of Troy Board material as per plans and details. In same manner cut in around angled baffles. The piece should be of a triangle shape. This shape to be cut out of a Troy Board in one piece. The triangular shaped piece is to be attached to the furring strips with the smaller point located to the lowest baffle point and the larger portion of the triangular shape to finish flush and plum with the baffle or safety ceiling to its left.



1 | SIDEWALL DETAIL - TOP VIEW
A-4 NOT TO SCALE



2 | WALL SECTION
A-4 NOT TO SCALE

MUSHROOM HEAD INSTALL PROCEDURE

Using the proper diameter bit, drill a hole into the base material to a depth of at least 1/2" or one anchor diameter deeper than the embedment required.

Blow the hole clean of dust and other material.

Hammer the anchor through the J or Z channels into the anchor hole until the head is firmly against the metal. Be sure the anchor is driven to the required embedment depth.



FASTENERS

A #14 X 3" SELF TAPPING HEX HEAD SCREW USED TO FASTEN BOARD TO Z-BAR



B #14 X 2" SELF TAPPING HEX HEAD SCREW USED TO FASTEN BOARD TO Z-BAR



C 1/4" X 2" LAG SCREW USED FOR CEILING APPLICATIONS



D 1/4" X 1 1/2" MUSHROOM HEAD SPIKE USED TO FASTEN Z-BAR, J CHANNEL & CLIPS TO CONCRETE STRUCTURE



E FENDER WASHER USED FOR CEILING APPLICATIONS



ABBREVIATIONS

AB	ANCHOR BOLT
AFF	ABOVE FINISHED FLOOR
BLKG	BLOCKING
CMU	CONCRETE MASONRY UNIT
(E)	EXISTING
GA	GAUGE
(N)	NEW
NTS	NOT TO SCALE
OC	ON CENTER
SQ	SQUARE
STAGG	STAGGERED
TB	TROY BOARD™
TBD	TO BE DETERMINED
TW	TROY WOOL™
TYP	TYPICAL
W/	WITH

GENERAL NOTES

ALL CONDUITS, JUNCTION BOXES, ELECTRICAL BOXES AND PANELS ARE TO BE SURFACED MOUNTED TO THE TROY SYSTEM™. NO CUT OUTS FOR THESE TO BE PERFORMED. (U.O.N)

SCREWS USED TO FASTEN TROY BOARD™ ARE TO LIE FLUSH WITH THE PANEL.

PAINT INSTRUCTIONS: USE AN AIRLESS SPRAYER WITH ACRYLIC LATEX BASE PAINT (2 - 3 COATS MAX). DO NOT FILL IN VOIDS.

INSTALLATION OF PANELS SHOULD BEGIN WITH A 2'-0" X 7'-10 $\frac{1}{2}$ " PANEL ON THE BOTTOM INSIDE CORNER OF WALL CONTINUING DOWN THE END OF RANGE.

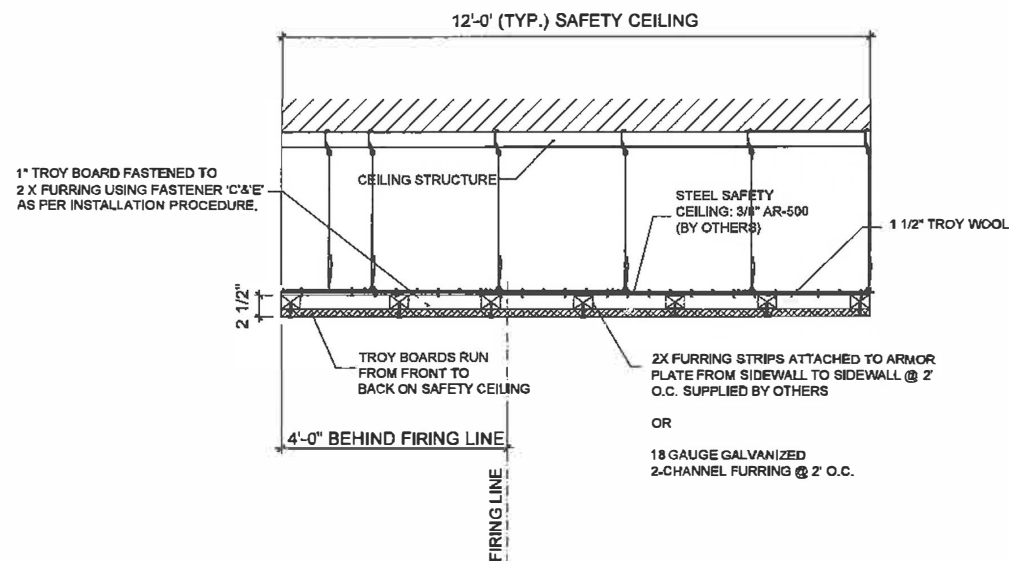
2" THICK TROY BOARD™ USED FOR WALLS.

1" THICK TROY BOARD™ USED FOR BAFFLES AND CEILING UNLESS OTHERWISE NOTED.

Z-CHANNELS ON BAFFLES RUN LONGITUDINALLY (UP AND DOWN RANGE). TROY BOARD™ WILL RUN ACROSS (LEFT TO RIGHT).

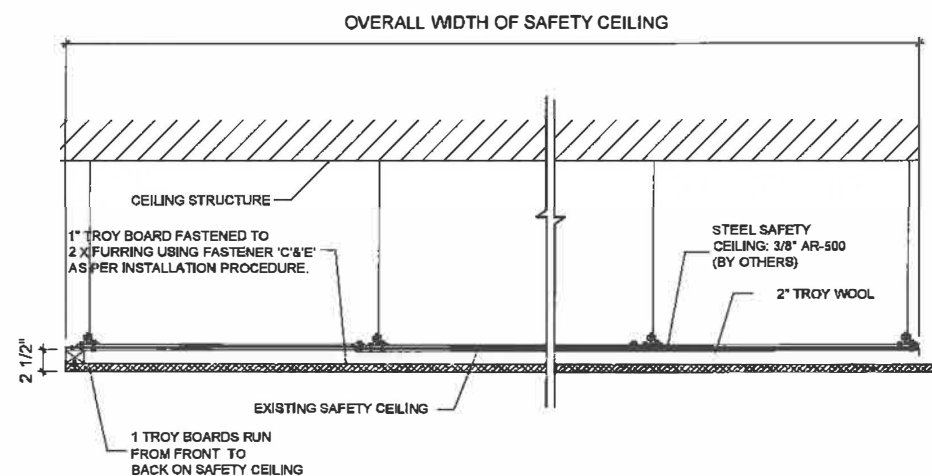
MATERIALS

TROY BOARD™	
TROY WOOL™	
CONCRETE/CMU	



1 SAFETY CEILING DETAIL
(SIDE VIEW)

A-6 SCALE: 1/4" = 1'-0"



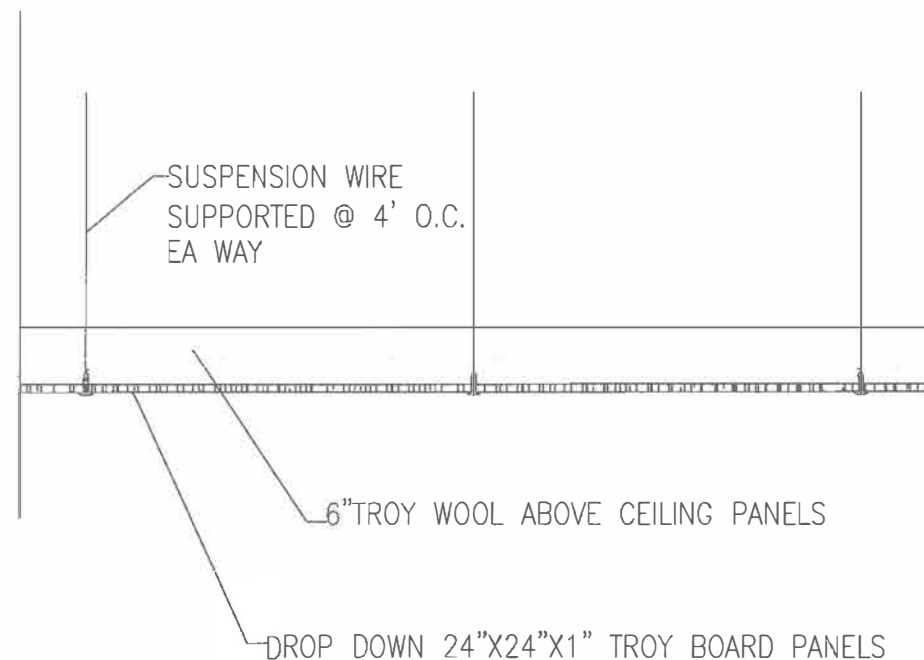
2 SAFETY CEILING DETAIL
(END VIEW)

A-6 NOT TO SCALE

NOTE:
COMMERCIAL TILE GRID (SUPPLIED BY
OTHERS) 2'X2'. GRID MUST BE
SUPPORTED EVERY 4' IN EACH
DIRECTION.

Safety Ceiling Install Procedure (with furring supplied by Troy Acoustics)

1. Attachment of 2" Troy Wool to ceiling surface using a spray adhesive (3M-90 or equal). The spray adhesive is to hold the Troy Wool in place until the Troy Board material is attached. The 2' width of the Troy Wool should fit snug in the bays of the furring channel. Use a 10" serrated bread knife to cut the Troy Wool. Cover entire designated surface with Troy Wool.
2. Start layout of Troy Board perpendicular to furring channel. Start the first course with the end (2' width side) of Troy Board flush against wall. Using the supplies Troy Board fasteners, attach Troy Board to furring strips with a minimum of 8 fasteners per Troy Board. Troy Board is a finish acoustic material. Make sure joints are tight. Troy Board is to be installed in a staggered seam method. i.e. As you start with the first course with a full sheet, the second course will start of with a half sheet. The pattern should look like masonry blocks once completed. Troy Board may be cut using a circular saw, hand saw, or reciprocating saw type. The Troy Board is manufactured with Portland cement; thereby dust will be created when using a circular saw.
3. The Troy Board material is 7'-10 1/2" long and WILL NOT fall on lay out of the furring strips. Therefore, attach two (2) additional furring strips, no longer than 8" ea, to ceiling surface located at end of Troy Board. These furring channels will keep the Troy Board flat and even from end to end. Spacing of furring channels at end of Troy Boards are to be at least 16" apart from each other, with 4" under the Troy Board just installed, and the other 4" is for the attachment of the next Troy Board.



3 ACOUSTICAL ABSORPTION CEILING
STANDARD COMMERCIAL
GRADE 2X2 TILE

A-6 NOT TO SCALE

FASTENERS

- A #14 X 3" SELF TAPPING HEX HEAD SCREW USED TO FASTEN BOARD TO Z-BAR
- B #14 X 2" SELF TAPPING HEX HEAD SCREW USED TO FASTEN BOARD TO Z-BAR
- C 1/4" X 2" LAG SCREW USED FOR CEILING APPLICATIONS
- D 1/4" X 1 1/2" MUSHROOM HEAD SPIKE USED TO FASTEN Z-BAR, J CHANNEL & CLIPS TO CONCRETE STRUCTURE
- E FENDER WASHER USED FOR CEILING APPLICATIONS

ABBREVIATIONS

AB	ANCHOR BOLT
AFF	ABOVE FINISHED FLOOR
BLKG	BLOCKING
CMU	CONCRETE MASONRY UNIT
(E)	EXISTING
GA	GAUGE
(N)	NEW
NTS	NOT TO SCALE
OC	ON CENTER
SQ	SQUARE
STAGG	STAGGERED
TB	TROY BOARD™
TBD	TO BE DETERMINED
TW	TROY WOOL™
TYP	TYPICAL
W/	WITH

GENERAL NOTES

ALL CONDUITS, JUNCTION BOXES, ELECTRICAL BOXES AND PANELS ARE TO BE SURFACED MOUNTED TO THE TROY SYSTEM™. NO CUT OUTS FOR THESE TO BE PERFORMED. (U.O.N)

SCREWS USED TO FASTEN TROY BOARD™ ARE TO LIE FLUSH WITH THE PANEL.

PAINT INSTRUCTIONS: USE AN AIRLESS SPRAYER WITH ACRYLIC LATEX BASE PAINT (2 - 3 COATS MAX). DO NOT FILL IN VOIDS.

INSTALLATION OF PANELS SHOULD BEGIN WITH A 2'-0" X 7'-10 1/2" PANEL ON THE BOTTOM INSIDE CORNER OF WALL CONTINUING DOWN THE END OF RANGE.

2" THICK TROY BOARD™ USED FOR WALLS.

1" THICK TROY BOARD™ USED FOR BAFFLES AND CEILING TILE UNLESS OTHER WISE NOTED.

Z-CHANNELS ON BAFFLES RUN LONGITUDINALLY (UP AND DOWN RANGE). TROY BOARD™ WILL RUN ACROSS (LEFT TO RIGHT).

MATERIALS

TROY BOARD™	
TROY WOOL™	
CONCRETE/CMU	