

PALM AVENUE

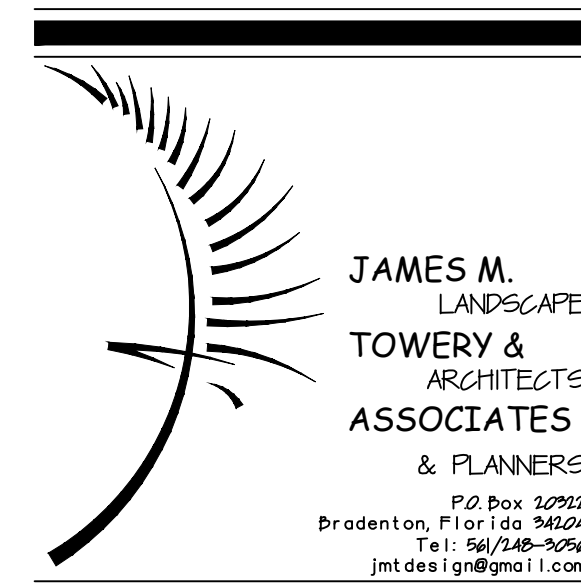
8TH AVENUE

21ST STREET

20TH STREET

AREA 1.

NOTES: SEE SHEET L6.0 FOR PLANT LIST, DETAILS & NOTES.  
ALL PLANTING BEDS TO USE OPTION 'A' 4-5" MEXICAN BEACH PEBBLES  
OR OPTION 'B' 4-5" BROWN EGG ROCK.



JAMES M.  
LANDSCAPE  
TOWERY &  
ARCHITECTS  
& PLANNERS  
P.O. Box 50922  
Bradenton, FL 34204  
Tel: 941/48-3056  
jmt@jmt.com

James M. Towery

Licence No. 617

HILLSBOROUGH COUNTY SHERIFFS OFFICE

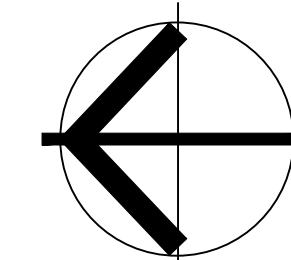
2008 EAST 8TH AVENUE

TAMPA, FLORIDA

MAIN BUILDING PLANTING PLAN

Revision Notes Date

SCALE 1" = 20'-0"



L5.0







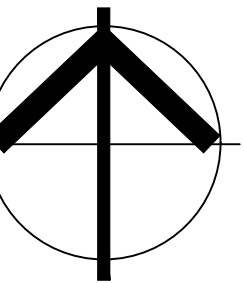
2008 EAST 8TH AVENUE  
TAMPA, FLORIDA

# WEST BUILDING PLANTING PLAN

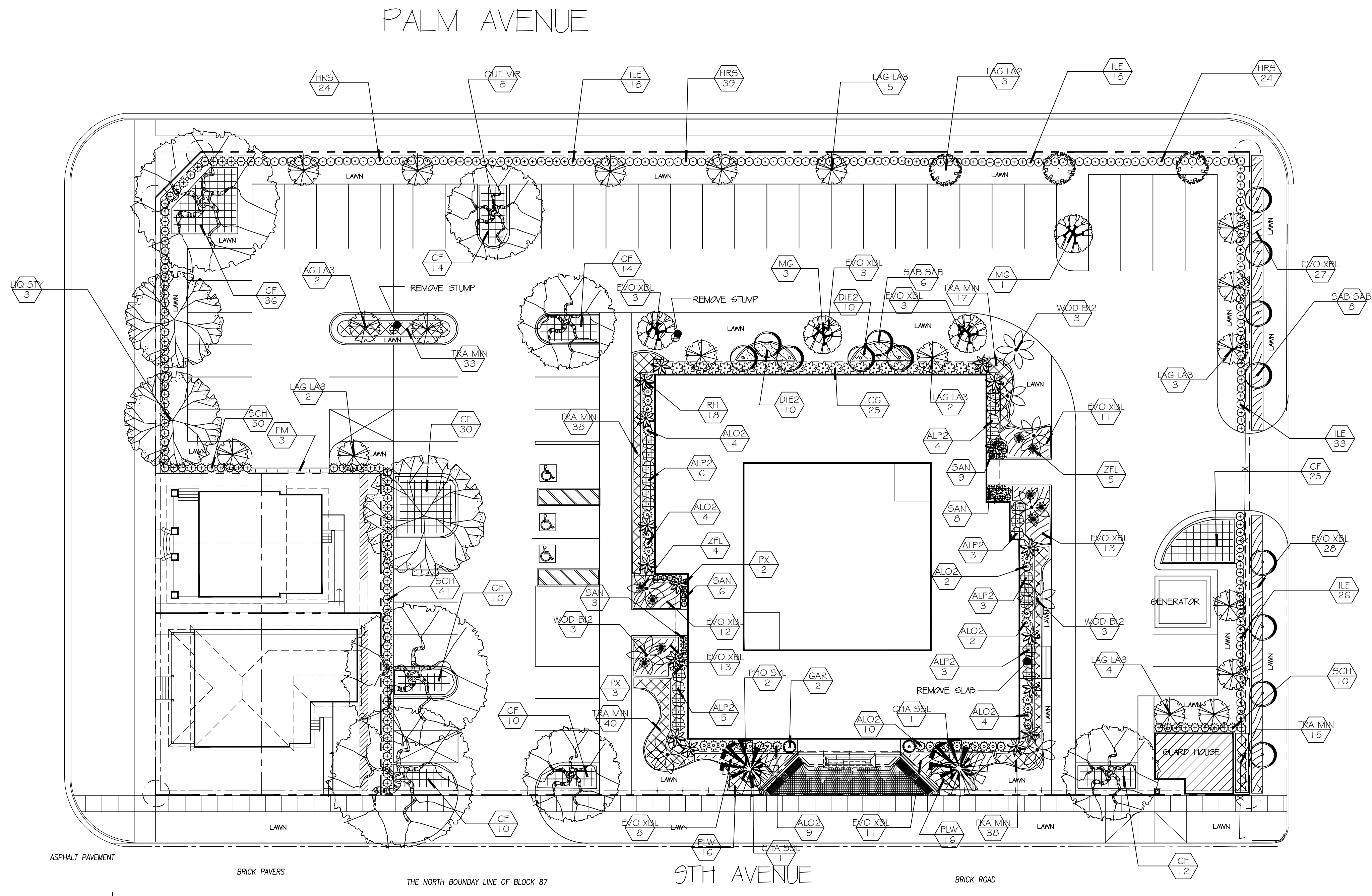
Licence No. 617

Revision	Notes	Date
----------	-------	------

SCALE 1" = 20'-0"



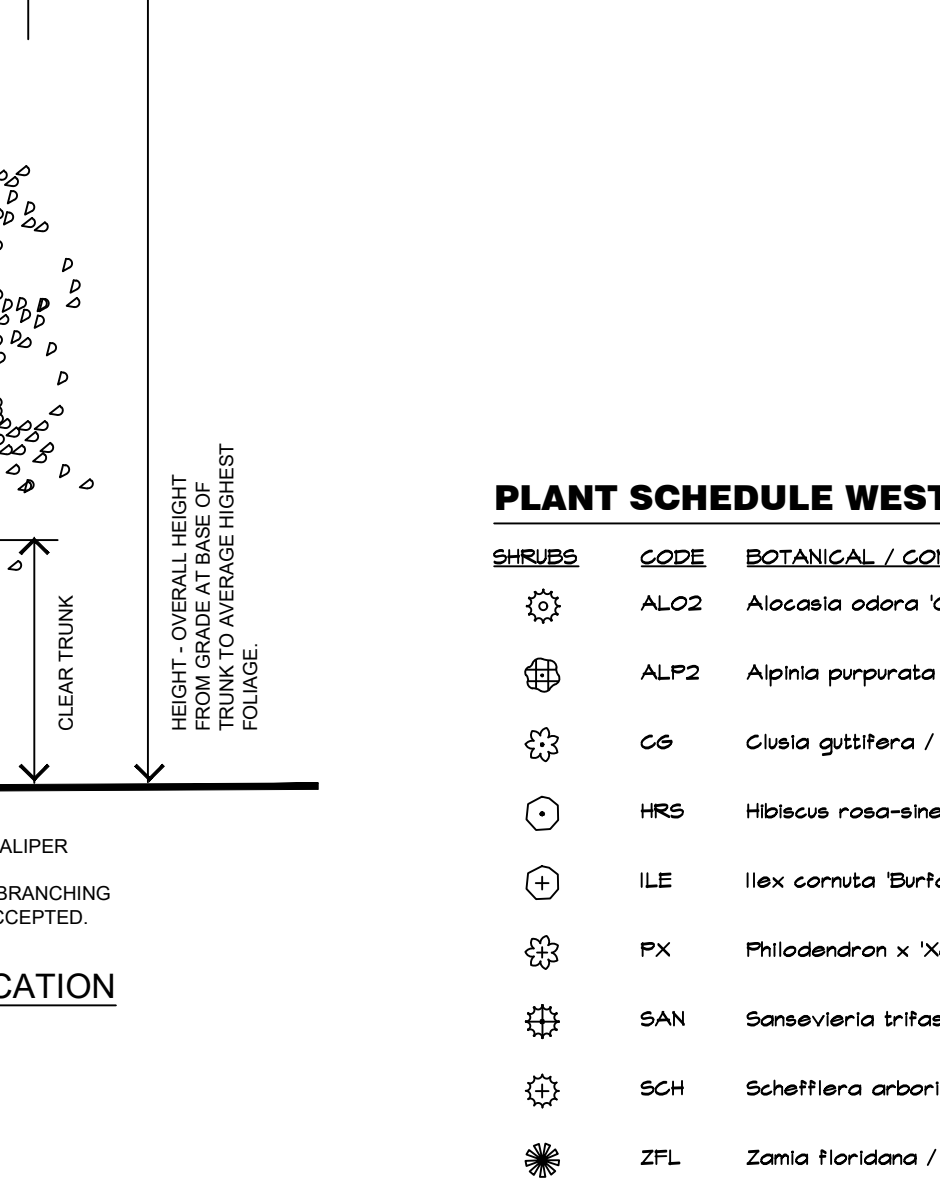
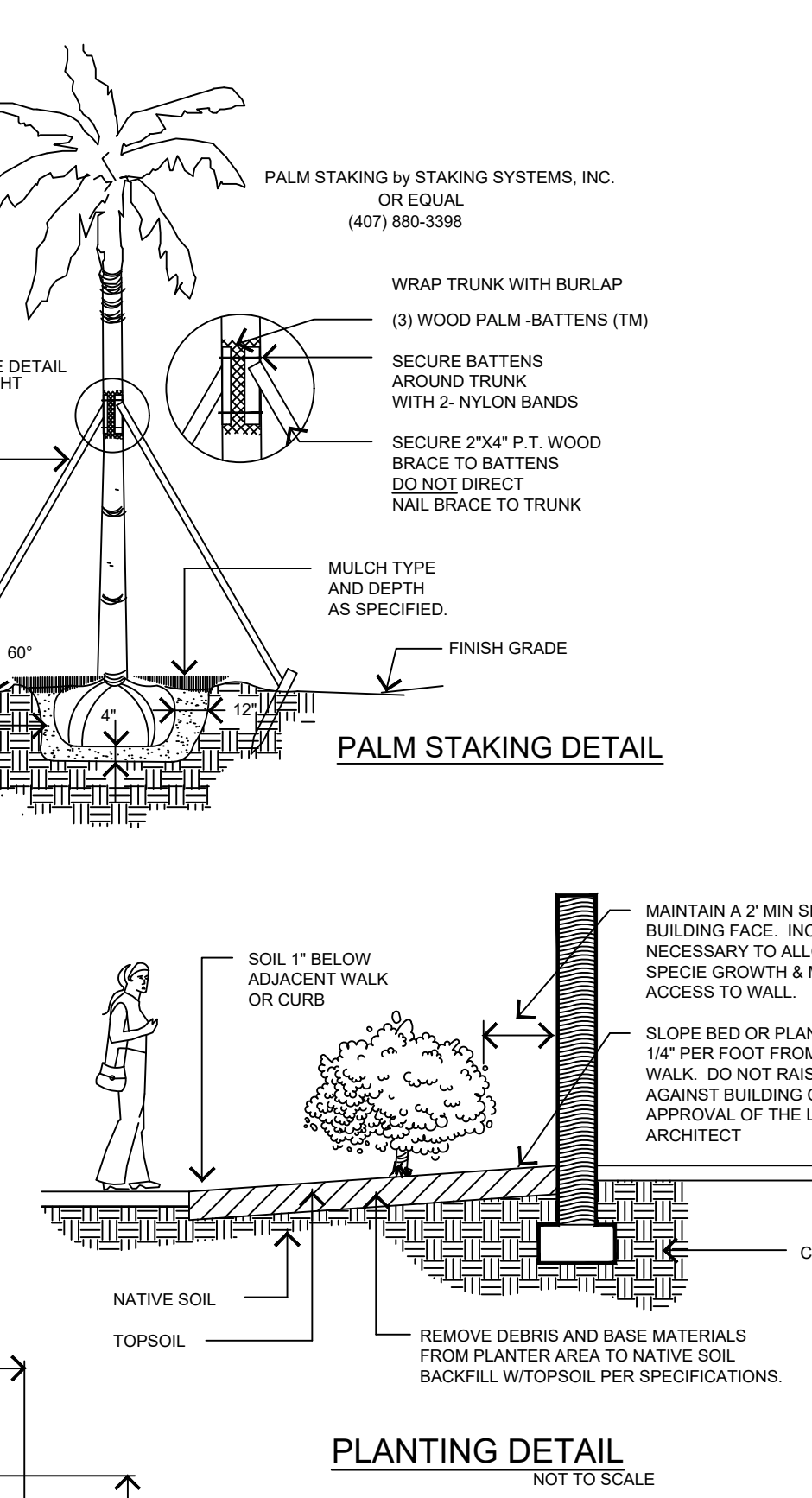
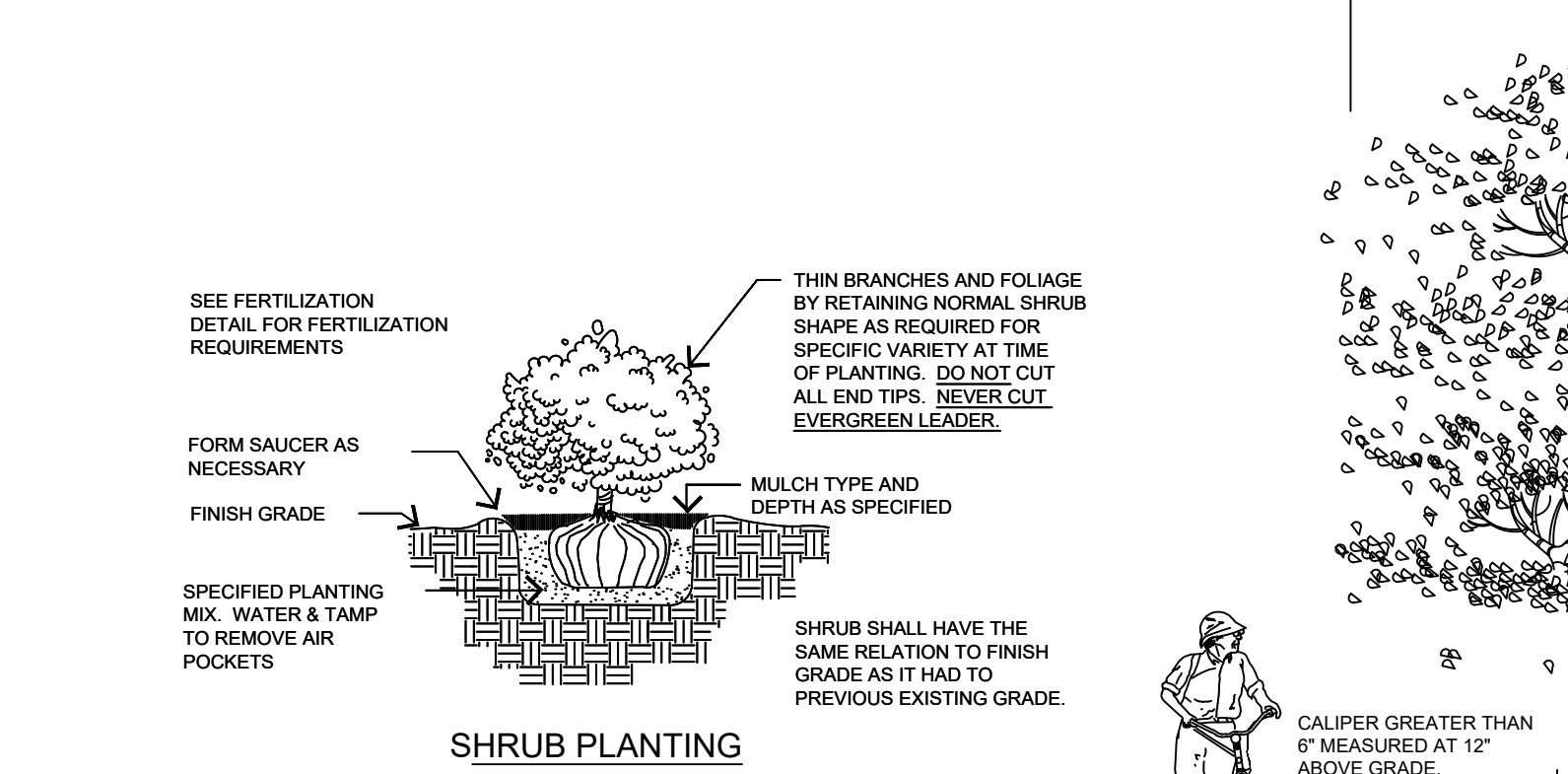
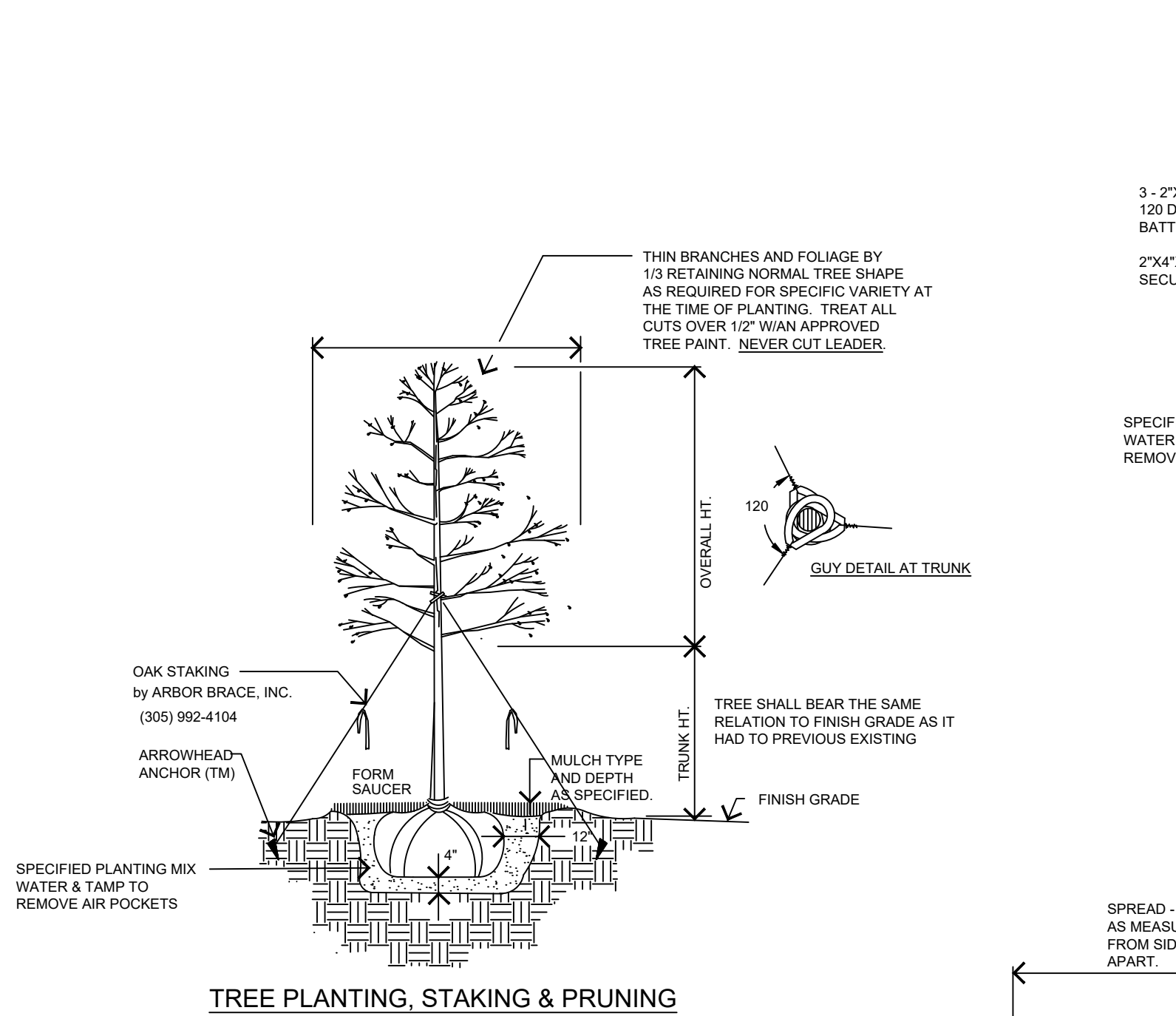
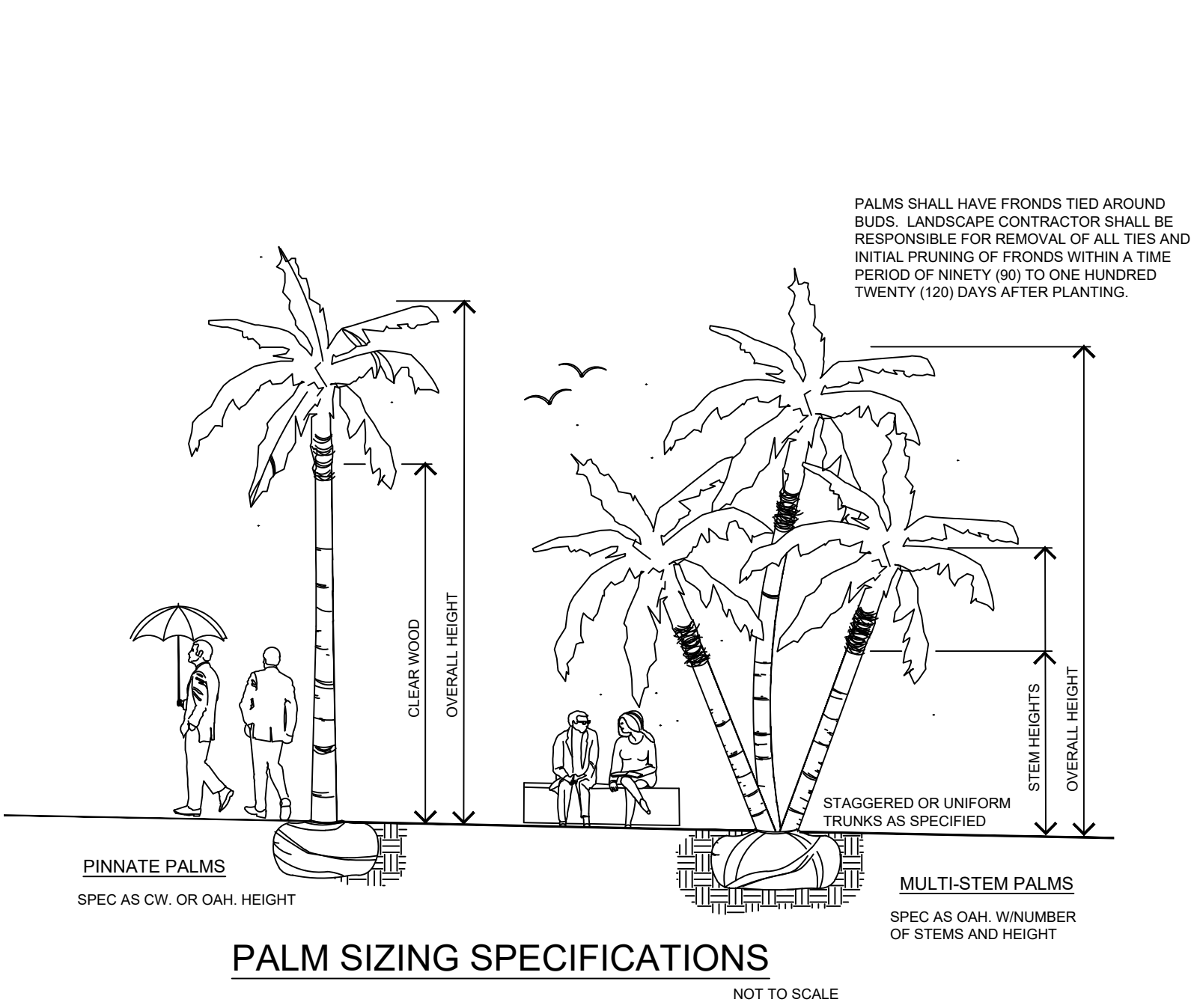
# L7.0



AREA 2.

NOTES: SEE SHEET L8.0 FOR PLANT LIST, DETAILS & NOTES.  
ALL PLANTING BEDS TO USE OPTION 'A' 4-5" MEXICAN BEACH PEBBLES  
OR OPTION 'B' 4-5" BROWN EGG ROCK.





## SOIL PREPARATION AND PLANTING MIX

- Prior to installation, the landscape contractor shall determine the adequacy of the existing soil for sustaining plants. The contractor shall provide soil samples taken from 5 to 6 locations, on the site mixed together and sent to an approved laboratory for analysis of pH, fertility and composition. Recommendations for deficiencies shall be determined by the landscape contractor.
- Prior to installation, the landscape contractor shall determine the adequacy of the soil for drainage and percolation. A shovel width hole 36" deep shall be dug in appropriate planting bed locations, filled with water and monitored for a percolation rate. Inadequate percolation shall be reported to the landscape architect or owner for correction. The landscape contractor shall be responsible for replacement of all plants due to inadequate drainage conditions if poor conditions are not reported.
- All existing turf and weed areas shall be treated with Round-up herbicide as necessary to eliminate all turf and weeds. A minimum of two (2) applications are required - an initial application and a second application 7 to 10 days later. Apply as per manufacturer's recommendations. Areas shall be mechanically scraped to remove dead foliage and litter. All debris shall be removed from the site.
- All Herbicide and pesticides shall be applied by a licensed applicator as per state and other codes.
- All earth and fill operations shall be brought within 1/10 of a foot of finished grade by others. The landscape contractor shall be required to adjust finished grades where necessary to meet walks, pavements, drives, etc. at proper elevation for sod and mulching operations.
- A topsoil mixture shall be spread over the site to a depth of 3" in all sod areas and 6" in all planting beds.
- Topsoil shall be natural, fertile agricultural soil capable of sustaining vigorous plant growth. It shall be uniform composition throughout and free of stones, lumps, live plants, roots and other extraneous material. pH shall be in the range of 5.5 to 6.5.
- Before placing topsoil, scarify the subsoil to a depth of 3". Remove debris and stones 1" diameter or larger.
- Finish grade to be a smooth even surface assuring positive drainage away from structures. Eliminate any low areas which may collect water.
- Amend backfill of all shrubs and groundcovers with 1/3 clean Florida Peat or approved planting mix. Mix organic soil amendments thoroughly with the native soil before backfilling planting pits.
- Planting Soil Mix for Trees, Shrubs and Groundcovers shall consist of a thoroughly blended mixture of:
  - Royal Palms  
60% Clean DOT Sand  
40% Approved Planting Mix
  - All Other Palms  
90% Clean DOT Sand  
10% Approved Planting Mix
  - Shrubs and Groundcovers  
70% Clean DOT Sand  
30% Approved Planting Mix

## FERTILIZATION

- Contractor shall correct pH as necessary as determined from required Soil Samples.
- Contractor shall determine the fertilization needs based on the results of the soil tests. Appropriate rates of a slow release fertilizer meeting the local ordinances shall be applied to all trees, palms, shrubs and groundcovers.
- Cost of fertilization shall be included in the initial cost of the plant material.

## IRRIGATION NOTES

Irrigation Plans shall be prepared by others.

The system shall be fully automatic and provide 100% coverage of the site.

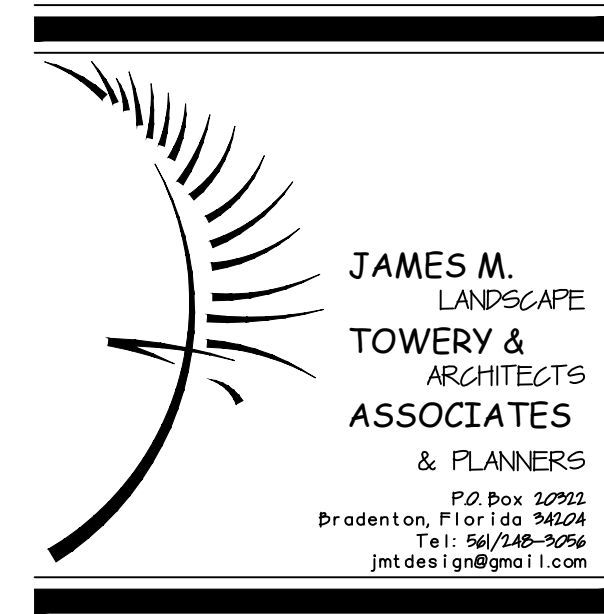
The Irrigation System shall provide:

- Rain Sensor Gauge.
- Separate Zones to Irrigate Turf and shrubs.
- Connection to the developer's water source.

The programming of the system shall take into consideration slow percolating soils.

## PLANTING NOTES

- The contractor shall refer to the landscape planting details, Plant List and, General Notes for complete landscape planting instructions.
- Installation of all work shall be coordinated with other contractors on the site in such a manner as to allow for a speedy and orderly completion of all work on the site. The landscape contractor shall closely coordinate with the irrigation contractor.
- Contractors are cautioned to be aware of underground utilities. Prior to excavation, the contractor shall check with the job site superintendent and utility companies for a location of all utilities.
- Any conditions found contrary to the plans shall be reported to the Landscape Architect for resolution along with a suggested course of action prior to altering the design solution presented in the plans.
- Prior to the installation of an operable irrigation system, the contractor shall be responsible for the hand watering of all tree, palms, shrubs and groundcovers that may be installed. Watering shall be a min of five (5) times per week and of sufficient quantity to guarantee the maintenance of plant material quality until such time as an operable irrigation system is available.
- It is the responsibility of the landscape contractor to assure that the plantings are receiving proper irrigation prior to the acceptance of the project by the owner. The landscape contractor shall coordinate with the irrigation contractor to adjust the system if too little or too much water is being applied.
- The landscape contractor shall be responsible for the replacement of plant material experiencing transplant shock due to the lack of water at any time during the planting operation.
- Mark out the locations of all planting beds and tree locations prior to the installation of the irrigation system so as to facilitate the layout of the irrigation system and tree bubblers.
- Plant material shall be Florida No. 1, or better quality as per "Grades and Standards for Nursery Plants", Florida Dept. of Agriculture and Consumer Affairs, or shall match quality standards as previously established by the Landscape Architect through the tagging of representative samples.
- All plant material shall either be sun or shade grown, as appropriate for the conditions on the site where the material is to be planted.
- All plant material shall be protected during transport and delivery to the job site with shade cloth or other acceptable means of windburn protection.
- The plant count quantities in the Plant List are for the convenience of the Landscape Contractor. Contractors shall verify all plant counts with the specified quantities on the landscape plans. The landscape contractor is responsible for all materials drawn n the plan.
- At his discretion, the landscape architect may require plants to be set in place and approved prior to installation. The landscape contractor shall call to schedule the inspection four (4) working days in advance.
- Typically, shrub and groundcover plantings are shown on plans as a mass planting bed. Plants shall be placed on a triangular spacing configuration with staggered spacing. Plant center to center spacing (o.c.) are listed in the Plant List.
- Trees grown in Grow Bags or grow bag type of materials must have the grow bag material completely removed prior to planting.
- Balled and burlapped material shall have the top one half (1/2) of the burlap around the base of the trunk cut and pulled back. Do not remove burlap. Wire Cages, straps, etc. must be cut and removed prior to installation.
- Trees shall be staked by means of an Arborbrace Tree Guying System.
- Ronstar, Surflan or other approved pre-emergent herbicide shall be applied to all planting beds in accordance with the manufacturer's recommended rate and specifications.
- The landscape contractor shall mulch all plant beds with a clean, weed free mulch of a type and of a depth as noted in the plant list. All free standing trees shall have a minimum of a 5' diameter mulch circle extending past the outside of the the planting pit saucer. Do not mulch annual beds.
- Sod shall be of the type as noted in the Plant List. All sod shall be free of nuisance species, exotic or invasive weeds or their seed. Sod shall be laid with tight joints, rolled and fertilized at time of installation.
- The contractor shall guarantee all plant material for a period of one year following the date of substantial completion.
- The contractor shall request an inspection of the project. If all work is complete and satisfactory in accordance with the contract documents, then the installation shall be considered substantially complete. Substantial completion shall constitute the beginning of the guarantee period.
- The landscape contractor shall provide the owner a complete maintenance program to be followed during and after the warranty period. During the warranty period, the landscape contractor shall not be held responsible for theft, vandalism or unusual acts of God.
- All plant material shall be Florida #1 or better quality at time of planting and shall be maintained in this same condition until final acceptance. Decline in condition and quality prior to acceptance shall be grounds for rejection and replacement.
- Removal of all staking and guy wires shall be the responsibility of the owner after plant establishment. The landscape contractor must agree to removal if done within the warranty period.



James M. Towery

Licence No. 617

HILLSBOROUGH COUNTY SHEFFIIS OFFICE

2008 EAST 8TH AVENUE  
TAMPA, FLORIDA

WEST BUILDING DETAILS & NOTES

Revision Notes Date

SCALE N/A

L8.0