

Purchasing Section  
P.O. Box 3371  
[purchasing@hcsso.tampa.fl.us](mailto:purchasing@hcsso.tampa.fl.us)

PH: 813-247-8034  
FAX: 813-242-1826

David Gee, Sheriff  
HILLSBOROUGH COUNTY SHERIFF'S OFFICE  
TAMPA, FLORIDA 33601

DATE: February 14, 2017

SUBJECT: Amendment No. 2 to RFP No.1-17 Pinebrooke II Renovations.

MESSAGE: Please note and acknowledge the following changes or additions to be included in the referenced section(s) of RFP No.1-17:

Reference Table of Contents:

1. The staging area has been defined as shown in attached Exhibit C, dated January 11, 2016.
2. GC electrical requirements for Firing Range HVAC can be found in attached Exhibit D, RM-001 HVAC Electrical, dated February 6, 2017.

TABLE OF CONTENTS	PAGE
Instructions to Proposers	2
Letter of Intent	4
DATE TIME AND PLACE – MEETINGS & DEADLINES	5
Part A – General Terms and Conditions	5
SIGNATURE OF ACKNOWLEDGEMENT	8
Part B – Special Provisions	9
Part C – Technical Specifications	24
Part D – Proposal Response	27
SIGNATURE OF AFFIRMATION AND DECLARATION	32
Package Label	34
Vendor Packet (Application, W9, ACH)	Attached
Construction Documents: (Exhibits A, B, C and D)	
Exhibit A: Construction Drawings, Wilder Architecture, Inc.	Attached
Exhibit B: Construction Specifications, Wilder Architecture, Inc.	Attached
Exhibit C: A-10 Bldg 2 Staging Area	Attached
Exhibit D: RM-001 HVAC Electrical	Attached



3. Technical Specification (Part C)(1)(c) – Replace c. in its entirety as follows:
  - c. The Work will include the renovation of two separate and existing spaces within the existing building, where the interior demolition has been completed for both spaces. The new spaces will house an indoor Firing Range at the south end of building and a Workout Gym at the west end of the building, refer to accompanying Construction Drawings, Exhibit A, Wilder Architecture, Inc. dated: January 16, 2017 and Construction Specifications, Exhibit B, Wilder Architecture, Inc. dated: January 16, 2017, Exhibit C, A-10 Building 2 Staging Area, dated: January 11, 2016, Exhibit D, RM-001 HVAC Electrical, dated: February 6, 2017, (collectively referred to as Construction Documents) for the full Scope of Work.
4. Technical Specification (Part C)(2)(a) – Replace a. in its entirety as follows:
  - a. The Contractor shall furnish all necessary labor, materials, tools, equipment, supervision, and incidentals necessary to perform all Work as described herein. The Scope of Work shall include: exterior and interior build-out as per Construction Drawings, Exhibit A, Wilder Architecture, Inc. dated: January 16, 2017, Construction Specifications, Exhibit B, Wilder Architecture, Inc. dated: January 16, 2017, Exhibit C, A-10 Building 2 Staging Area, dated: January 11, 2016, and Exhibit D, RM-001 HVAC Electrical, dated: February 6, 2017.
5. Technical Specification (Part C)(2)(d) – Replace d. in its entirety as follows:
  - d. All Work shall be accomplished in accordance with the construction documents (Refer to Construction Drawings, Exhibit A, Wilder Architecture, Inc. dated: January 16, 2017, Construction Specifications, Exhibit B, Wilder Architecture, Inc. dated: January 16, 2017, Exhibit C, A-10 Building 2 Staging Area, dated: January 11, 2016, and Exhibit D, RM-001 HVAC Electrical, dated: February 6, 2017.) and the requirements furnished within all the RFP documents to include any Q & A Responses, Addenda and/or Amendments issued by HCSO. The Contractor shall provide all incidentals required for the construction to meet all Local, State, and Federal codes and ordinances.

Please note that this document hereby becomes a part of RFP No. 1-17 and without this document the Proposal is considered incomplete.

Sincerely,

**- SIGNATURE ON FILE -**

Christina R. Porter, CPA  
Chief Financial Officer



ACKNOWLEDGEMENT OF AMENDMENT

We do hereby acknowledge the information and/or changes to the Exhibits and Technical Specifications  
as described in Amendment No. 2 to RFP No. 1-17

PLEASE PRINT - Company Name \_\_\_\_\_

By \_\_\_\_\_

Title \_\_\_\_\_

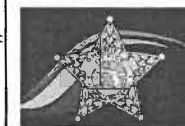
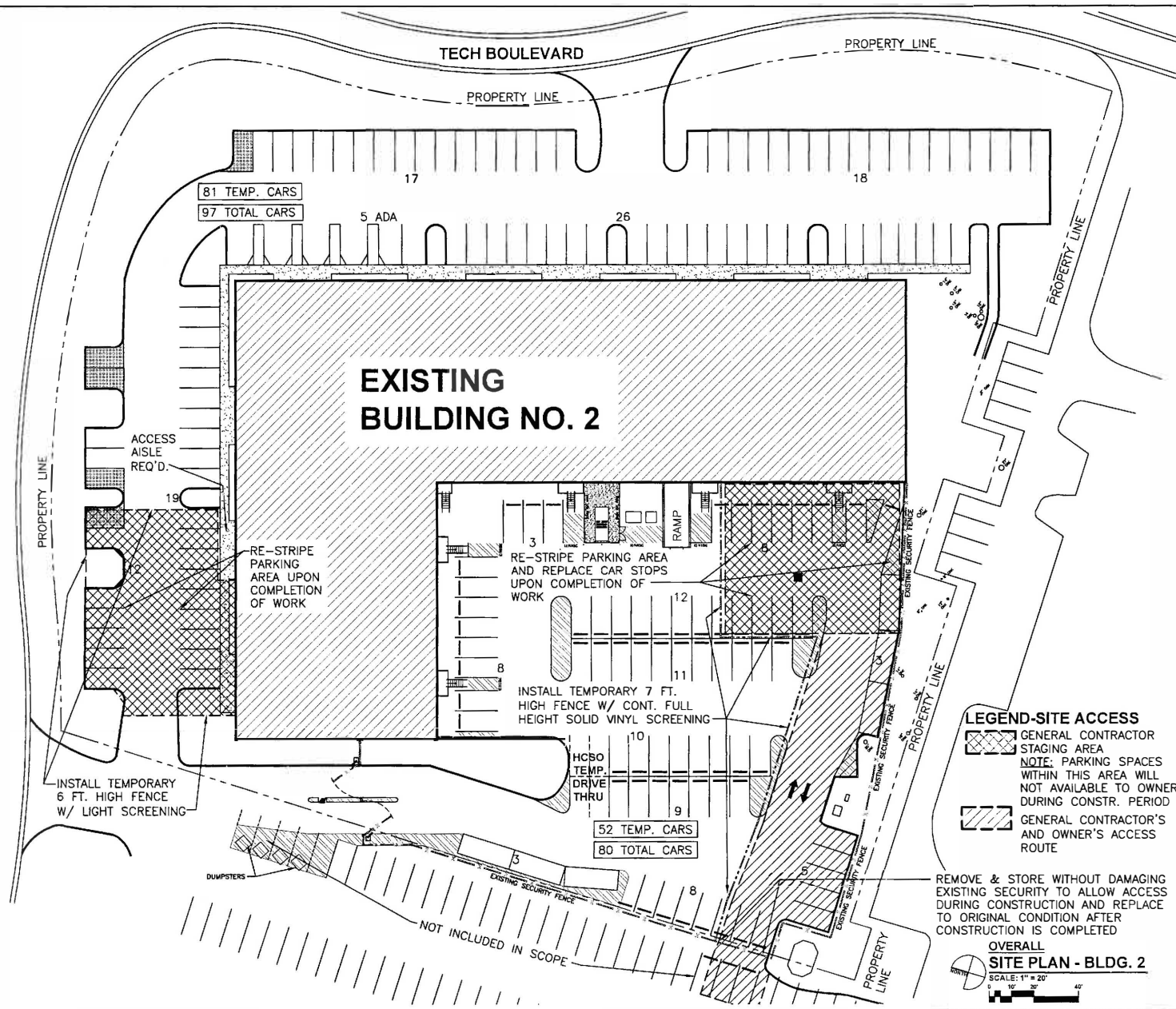
Date \_\_\_\_\_

*Signature* \_\_\_\_\_

(Signed Acknowledgement must be included with your RFP/Bid Package)



WINDHORST ROAD



HILLSBOROUGH COUNTY  
SHERIFF'S OFFICE

DAVID GEE, SHERIFF

2008 8th AVENUE  
TAMPA, FLORIDA 33605  
WWW.HCSO.TAMPA.FL.US

PROJECT:  
RENOVATION TO:  
**PINEBROOKE  
BUSINESS  
PARK  
BUILDING NO. 2**

PROJECT PHASE  
**DESIGN  
DEVELOPMENT**

PREPARED BY:  
HILLSBOROUGH COUNTY SHERIFF'S OFFICE  
**FACILITIES  
MANAGEMENT  
BUREAU**

DRAWN BY:  
a.cordova  
ISSUE DATE:  
01-11-2016  
REVISIONS:

SHEET NAME:  
OVERALL  
SITE PLAN - BLDG. 2

SHEET NUMBER:

**A-1.0**





# CAREY'S

## SMALL ARMS RANGE VENTILATION

### INDEX

- RM-201 RANGE MECHANICAL GENERAL NOTES, ABBREVIATIONS & SYMBOLS
- RM-101 RANGE MECHANICAL FLOOR PLAN
- RM-102 RANGE MECHANICAL WALL PENETRATIONS AND EQUIPMENT PAD PLAN
- RM-301 RANGE MECHANICAL ELEVATION AND SECTION
- RM-501 RANGE MECHANICAL DETAILS
- RM-601 RANGE MECHANICAL SCHEDULES
- RM-700 RANGE MECHANICAL CONTROL NOTES, ABBREVIATIONS & SYMBOLS
- RM-701 RANGE MECHANICAL CONTROLS CONDUIT PLAN

### SYMBOL LEGEND

XXX-X	EQUIPMENT IDENTIFICATION TAG
[Symbol]	EQUIPMENT HATCH
XXØ	ROUND DUCT
VxH	RECTANGULAR DUCT
VxH XXØ	RECTANGULAR TO ROUND DUCT CONNECTION
[Symbol]	SUPPLY AIR UP OR IN SECTION
[Symbol]	RETURN, EXHAUST, OR OUTSIDE AIR UP OR IN SECTION
[Symbol]	SUPPLY AIR DOWN OR AWAY
[Symbol]	RETURN, EXHAUST, OR OUTSIDE AIR DOWN OR AWAY
[Symbol]	MANUAL VOLUME DAMPER
→ XX	AIR FLOW MARKER

### ABBREVIATIONS

FAU	FILTRATION AIR-HANDLING UNIT
MAU	MAKE-UP AIR UNIT
CFM	CUBIC FEET PER MINUTE
VFD	VARIABLE FREQUENCY DRIVE
DDC	DIRECT DIGITAL CONTROL PANEL
RDP	RADIAL DIFFUSER PLENUM ASSEMBLY
DB	DRY BULB
WB	WET BULB
RH	RELATIVE HUMIDITY
OA	OUTSIDE AIR
EA	EXHAUST AIR
SA	SUPPLY AIR
RA	RETURN AIR
RM	RANGE MECHANICAL
#	ROUND DUCT DESIGNATOR
ADJ	ADJUSTABLE
SP	STATIC PRESSURE
INWG	INCHES WATER GAUGE
SQFT	SQUARE FEET
HEPA	HIGH EFFICIENCY PARTICULATE ARRESTOR FILTER
SWSI	SINGLE WIDTH SINGLE INLET
RPM	REVOLUTIONS PER MINUTE
HP	HORSEPOWER
BHP	BRAKE HORSEPOWER
V	VOLTS
HZ	HERTZ
PH	PHASE
ΔT	TEMPERATURE DIFFERENTIAL
BTUH	BRITISH THERMAL UNITS PER HOUR
LBS	POUNDS
ESP	EXTERNAL STATIC PRESSURE
NEMA	NATIONAL ELECTRICAL MANUFACTURER ASSOCIATION

### RANGE MECHANICAL NOTES

- THESE GENERAL NOTES APPLY TO ALL BALLISTIC RANGE VENTILATION WORK. CAREY'S SHALL BE IMMEDIATELY NOTIFIED OF ANY DISCREPANCIES OR CHANGES TO THE RANGE LAYOUT.
- THE RANGE VENTILATION SYSTEM HAS BEEN DESIGNED IN ACCORDANCE WITH NATIONAL INSTITUTE OF OCCUPATIONAL SAFETY AND HEALTH (NIOSH) SUGGESTED DESIGN CRITERIA. THESE REQUIREMENTS HAVE PROVEN TO PROVIDE EXPOSURES UNDER THE OCCUPATIONAL SAFETY AND HEALTH ASSOCIATION (OSHA) ALLOWABLE LIMITS FOR LEAD EXPOSURE FOUND IN OSHA 29 CFR.
- DUCT SIZES SHOWN ARE FREE AREA SIZES. INSULATE ALL OUTSIDE DUCT WITH MINIMUM R-8 INSULATION AND WEATHERPROOF JACKETING. DO NOT LINE FAU RETURN DUCTWORK.
- ALL RANGE SUPPLY AND EXHAUST DUCT SHALL BE 2" WATER COLUMN PRESSURE RATED AND INSTALLED PER SMACNA STANDARDS.
- USE A FLANGED TYPE TRANSVERSE DUCT CONNECTOR OR DUCTWATE TYPE CONNECTION ON ALL DUCTWORK.
- SEAL ALL DUCTS WITH UNITED OR EQUIVALENT SEALANT. SEAL ALL TRANSVERSE JOINTS, LONGITUDINAL SEAMS, CONNECTIONS AND DUCT PENETRATIONS. ALL DUCT SHALL MEET THE REQUIREMENTS OF SEAL CLASS A.
- FOLLOW SMACNA STANDARDS FOR DUCT CONSTRUCTION AND DUCT REINFORCEMENT DETAILS.
- INSTALLING SHEET METAL CONTRACTOR SHALL VERIFY FINAL SIZES AND LOCATION OF EQUIPMENT WITH FINAL MANUFACTURER SUBMITTALS OR IN FIELD PRIOR TO FABRICATION OF DUCTWORK.
- REFER TO RM-700 FOR GENERAL CONTROL NOTES AND SPECIFICATIONS.
- THE INDOOR FIRING RANGE ENVELOPE SHALL BE AN AIR-TIGHT SEALED SPACE INCLUDING ALL DOORS AND WINDOWS BY THE GENERAL CONTRACTOR.
- ALL WALL PENETRATIONS BY OTHERS.
- ALL EQUIPMENT PADS BY OTHERS.

THIS PLAN AND SPECIFICATIONS ARE THE PROPERTY OF CAREY'S. NO PART OF THIS PLAN OR SPECIFICATIONS SHALL BE REPRODUCED OR TRANSMITTED IN ANY FORM OR BY ANY MEANS, ELECTRONIC OR MECHANICAL, WITHOUT THE WRITTEN PERMISSION OF CAREY'S.

DATE	
REVISIONS	
MARKER	
4201 W 138th ST, STE B PINEY PARK, IL 60067 CAREYCENTRAL.COM	P: 708.519.2148 F: 708.439.2150
HILLSBOROUGH COUNTY SHERIFF'S OFFICE RANGE	TAMPA, FL
DRAWN KMM	
CHECKED KMP	
DATE 2017-03-08	
JOB NO.	
SHEET RM-001	













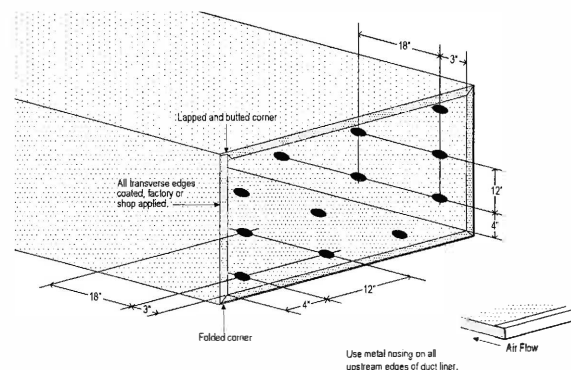




SCALE: NTS

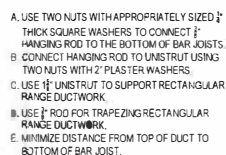


SCALE: NTS



### INSULATION FASTENER SPACING DETAIL

SCALE: NTS



ALL DUCT HANGING METHODS MUST BE SMACNA  
APPROVED AND ACCEPTED BY CAREY'S HEATING  
& AIR CONDITIONING, INC.

### DUCT SUPPORT DETAIL

SCALE: NTS

HILLSBOROUGH COUNTY SHERIFF'S OFFICE RANGE TAMPA, FL	DRAWING KMY	 <b>EAREY'S</b> SURVEYING & MAPPING, A FLORIDA CORPORATION 43201 W. LINDEN ST., STE. B P. 706. 637 2445 TINSLEY PARK, IL 60487 F. 708. 232 2140	MARKER	REVISIONS	DATE
	CHECKED RUP DATE 2/11-02-96 JOB NO.				
RM-501	SHEET				



### RADIAL DIFFUSER PLENUM SCHEDULE

TAG	SERVICE	LOCATION	DIFFUSER QUANTITY	DES. AIRFLOW (CFM)	DAMPER SIZE	BASIS OF DESIGN	NOTES
RDP-1	FIRING RANGE SUPPLY AIR	FIRING RANGE	5	2,400	2 - 12"	CAREY'S 48ABS24-2-12	1 - 3
RDP-2	FIRING RANGE SUPPLY AIR	FIRING RANGE	2	2,400	2 - 12"	CAREY'S 36ABS24-2-12	1 - 3

1. ROUND MANUAL VOLUME BALANCING DAMPERS ARE SHIPPED LOOSE FOR FIELD INSTALLATION.
2. INSTALLING CONTRACTOR TO MOUNT DAMPERS AS CLOSE TO GRADUATED SUPPLY DUCT AS POSSIBLE WHILE PERMITTING EASE OF ACCESS FOR BALANCING.
3. INSTALLING CONTRACTOR TO SUPPLY START COLLARS

### AIRFLOW SCHEDULE

SERVICE	RANGE RETURN (CFM)	FAU EXHAUST (CFM)	FAU SUPPLY (CFM)	BYPASS AIR (CFM)	MAU RETURN (CFM)	OUTSIDE AIR (CFM)	MAU SUPPLY (CFM)	RANGE SUPPLY (CFM)
SYSTEM 1	RANGE 1	17,820	5,670	12,150	6,800	5,350	4,050	9,400
								16,200

### FILTRATION AIR-HANDLING UNIT SCHEDULE

UNIT NO.	SERVICE	LOCATION	FAN DATA					MOTOR/ELECTRICAL DATA						ECONOMIZER SECTION			ESTIMATED WEIGHT (Lbs)	BASIS OF DESIGN	REMARK
			CFM	T.S.P. IN WG	RPM	FAN TYPE	DRIVE	HP	BHP	VOLTS	PH	HZ	RPM	RETURN AIR (CFM)	EXHAUST AIR (CFM)	SUPPLY AIR (CFM)			
FAU-1	FIRING RANGE	GRADE	17,160	8.03	2,058	CENT. DWDI	BELT	40.0	30.20	208	3	60	1,750	17,160	5,670	12,150	5,754	DAIKIN OAH040GV8M	1 - 12

1. HIGH PRESSURE LOW LEAKAGE CONSTRUCTION
2. PREPAINTED G60 GALV STEEL EXTERIOR
3. R-13 INJECTED FOAM INSULATION
4. ZINS FRAME
5. CURB READY BASE
6. PREMIUM EFFICIENCY MOTOR RATED FOR INVERTER DUTY
7. THE AIR HANDLING UNIT IS SHIPPED IN MULTIPLE SECTIONS FOR FIELD ASSEMBLY IN ACCORDANCE WITH MANUFACTURER'S INSTRUCTIONS.
8. WEATHER HOODS FOR THE EXHAUST AIR OUTLET ARE SHIPPED LOOSE FOR FIELD INSTALLATION.
9. FACTORY INSTALLED DAMPER IN EXHAUST OPENING
10. EXHAUST DAMPER ACTUATOR SHALL BE FURNISHED AND INSTALLED
11. BY CONTROL CONTRACTOR.
12. FACTORY INSTALLED VARIABLE FREQUENCY DRIVE IN MOTOR SECTION
- DISCONNECT BY ELECTRICAL CONTRACTOR

### DDC PANEL SCHEDULE

UNIT NO.	SERVICE	ENCLOSURE TYPE	REMARKS
DDC-1	FIRING RANGE	NEMA 1	1 - 2

1. 120V 20A CIRCUIT AND DISCONNECT PROVIDED BY OTHERS
2. INTERNET CABLE AND CONNECTION BY OTHERS

### FILTER SCHEDULE

LOCATION	CFM	FILTER I					FILTER II					FILTER III					TOTAL FILTER		REMARK
		QUANTITY & SIZES (IN)	TYPE	EFFICIENCY	FACE AREA (SQFT)	DES. FACE VELOCITY (FPM)	QUANTITY & SIZES (IN)	TYPE	EFFICIENCY	FACE AREA (SQFT)	MAX FACE VELOCITY (FPM)	QUANTITY & SIZES (IN)	TYPE	EFFICIENCY	FACE AREA (SQFT)	MAX FACE VELOCITY (FPM)	CLEAN IN WG	DIRTY IN WG	
FAU-1	17,160	(12) 20X24X2	MINI-PLEAT	MERV-8	37.7	455	(12) 20X24X12	V-PANEL	MERV-14	37.7	455	(8) 24x24x12 (4) 12x24x12	99.97% HEPA	MERV-17	40.0	429	1.94	5.8	1 - 3

1. FILTERS ARE SHIPPED LOOSE FOR FIELD INSTALLATION.
2. INSTALLING CONTRACTOR SHALL RECEIVE THE FILTERS AND PLACE INTO STORAGE UNTIL READY FOR INSTALLATION OF THE FILTERS.
3. INSTALLING CONTRACTOR SHALL INSTALL THE FILTERS IN THE FILTER FRAMES WHEN DIRECTED TO BY THE RANGE START-UP TECHNICIAN JUST PRIOR TO THE RANGE CLOSE-OUT TESTING.

### MAKE-UP AIR UNIT SCHEDULE

UNIT NO.	SERVICE	LOCATION	PERFORMANCE DATA						ELECTRICAL DATA				ECONOMIZER SECTION.				ESTIMATED WEIGHT (Lbs)	BASIS OF DESIGN	REMARKS
			FAN TYPE	CFM	TOTAL STATIC IN H2O	RPM	BHP	HP	VOLTS	PH	MROPD (A)	MCA (A)	MINIMUM AIR	SUPPLY AIR (CFM)	RETURN AIR (CFM)	OUTSIDE AIR (CFM)			
MAU-1	FIRING RANGE	GRADE	AF SWSI	9,400	3.44	1,670	8.3	15.0	208	3	300	250.7	11,000	11,000	4,400	6,600	5,175	DAIKIN MPS035F	1 - 15

1. PREPAINTED GALV STEEL EXTERIOR
2. DOUBLE-WALL CONSTRUCTION
3. 4.0 R-VALUE INSULATION
4. ETI/MEA-USA LISTED UNIT
5. FIELD INSTALLED BACNH M5TP CARD
6. DX COIL WITH STAINLESS STEEL DRAIN PAN
7. MODULATING ELECTRIC HEAT WITH SCR CONTROL
8. DISCHARGE SUPPLY AIR TEMPERATURE CONTROL VIA MODULATING HOT GAS REHEAT
9. FIELD POWERED 115V GFI POWER RECEPTACLE
10. ODP PREMIUM EFFICIENCY MOTOR
11. ALL COILS ARE FIN AND TUBE TYPE. FIN OF ALUMINUM AND TUBE OF COPPER.
12. 0 - 30% OUTSIDE AIR ECONOMIZER WITH MOTORIZED DAMPER
13. MERV-8 OUTSIDE AIR FILTER RACK
14. CUSTOM CURB WITH INTERNAL BYPASS AND BALANCING DAMPERS
15. DISCONNECT BY ELECTRICAL CONTRACTOR

### MAKE-UP AIR COOLING/HEATING SCHEDULE

UNIT NO.	COOLING COIL SECTION						HOT GAS REHEAT COIL				ELECTRIC HEAT SECTION					COMPRESSOR SECTION		
	CAPACITY Btu/hr	ENT. TEMP (F)		LEA. TEMP (F)		AMBIENT AIR TEMP (F)	ENT. TEMP (F)		LEA. TEMP (F)		CAPACITY Btu/hr	ENT. TEMP (F)	LEA. TEMP (F)	SIZE (KW)	CONTROL	CAPACITY CONTROL	POWER (KW)	REFRIG TYPE
		D/B	W/B	D/B	W/B		D/B	W/B	D/B	W/B								
MAU-1	377,425	79.2	67.8	55.6	54.9	92.4	55.8	-	68.0	-	245,808	45.0	69.1	72	SCR	5 STEPS	28.7	R410A

THIS SEAL AND SIGNATURE APPLY ONLY TO THE ORIGINAL SET OF DRAWINGS. IT IS THE RESPONSIBILITY OF THE SEALER TO VERIFY THE ACCURACY OF THE INFORMATION PROVIDED AND TO SIGN THE SEAL. THE SEAL IS VOID IF IT IS NOT SIGNED BY THE SEALER. THE SEAL IS VOID IF IT IS NOT SIGNED BY THE SEALER.

HILLSBOROUGH COUNTY  
SHERIFF'S OFFICE RANGE  
TAMPA, FL

DRAWN: KMM  
CHECKED: WJP  
DATE: 2017-02-06  
JOB NO:  
SHEET: RM-601

REVISIONS

MARKER

CAREY'S  
RADIAL AIRFLOW HANDLING UNIT  
8201 W. LINDSEY ST. STE. B P.O. BOX 550 TAMPA, FL 33607  
TINLEY PARK, IL 60487 F: 708.488.2150  
CAREYSCENTRAL.COM



D

- C

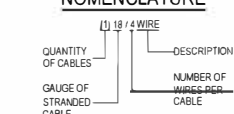


②

100

④

### CONDUIT LABELLING SCHEME



## NOMENCLATURE



## ③



## ③

- THE OPERATOR WILL PUSH THE SWITCH. THE "DO NOT SHOOT / STARTUP IN PROGRESS" LIGHT SHALL GO ON.
- MOTORIZED OUTSIDE AIR DAMPER AND EXHAUST AIR DAMPER SHALL RECEIVE A 0-10 VDC SIGNAL TO DRIVE TO OPEN POSITION SET AT COMMISSIONING STARTUP.
- FAU AND MAU FANS SHALL START WITH THE CLOSURE OF THE END SWITCH OF THE UNITS' DAMPERS. FAU FAN SHALL START SLIGHTLY AHEAD OF MAU FAN (APPROXIMATELY 6 SECONDS).
- FAU FAN VARIABLE FREQUENCY DRIVE (VFD) SHALL MODULATE TO MAINTAIN A 0.5" WG NEGATIVE RANGE DIFFERENTIAL STATIC PRESSURE WHILE THE MAU FAN SLOWLY RAMP UP TO THE PRESET SUPPLY VFD SETTING DETERMINED DURING COMMISSIONING.
- AFTER A TIME OF APPROXIMATELY 12 MINUTES WHEN THE SYSTEMS REACH STEADY STATE, THE "SAFE TO SHOOT/RANGE READY" LIGHT WILL TURN ON AND THE "DO NOT SHOOT/STARTUP IN PROGRESS" LIGHT WILL TURN OFF.
- THE FAU/VFD WILL MODULATE THROUGHOUT THE OCCUPIED CYCLE TO MAINTAIN RANGE PRESSURE OF A NEGATIVE 0.05" WG AS REFERENCED TO THE BASE BUILDING.
- THE RANGE ENTRANCE DOORS WILL BE MONITORED. IF THE RANGE DOOR IS OPEN FOR LONGER THAN 15 SECONDS (ADJ.) DURING START UP, THE RANGE WILL ALARM AND SHUT DOWN. DURING STEADY STATE, IF A RANGE DOOR IS OPEN FOR LONGER THAN 3 MINUTES (ADJ.) THE RANGE WILL ALARM.
- IF OUTSIDE AIR IS LESS THAN 55 DEGREES F, (ADJ.) MAU SHALL EMULATE HEATING AND MODULATE GAS HEAT TO MAINTAIN SUPPLY AIR TEMPERATURE OF 70 DEGREES F, (ADJ.).
- IF OUTSIDE AIR IS GREATER THAN 75 DEGREES F, (ADJ.) OR RANGE ENTERING AIR RELATIVE HUMIDITY RISES ABOVE 60% (ADJ.) MAU SHALL EMULATE COOLING AND COMPRESSORS SHALL STAGE ON TO PROVIDE COOLING AND SHALL MODULATE THE HOT GAS REHEAT COIL TO MAINTAIN RANGE ENTERING TEMPERATURE OF 72 DEGREES F (ADJ.).
- IF AT ANY TIME THE RANGE DIFFERENTIAL PRESSURE RISES ABOVE 0.0" WG FOR MORE THAN 2 MINUTES, THE RANGE WILL AUTOMATICALLY ALARM AND SHUT DOWN.
- IF AT ANY TIME THE FILTER PRESSURE DIFFERENTIAL EXCEEDS PARAMETERS (DETERMINED DURING START-UP), THE RANGE WILL ALARM.
- THE SYSTEMS SHALL MONITOR AND REACT TO A LOSS OF DUCT PRESSURE IN EACH OF THE SUPPLY AND EXHAUST DUCTS. IF PRESSURE IS LOST IN EITHER SUPPLY OR RETURN DUCTS THEN THE SYSTEM SHALL SHUT DOWN. (THIS WILL STOP POTENTIAL BUILDING DAMAGE IF ONLY ONE FAN WAS RUNNING.)
- THE RANGE SHALL BE SHUT OFF WITH THE PUSH-BUTTON SWITCH. SYSTEMS SHALL HAVE A 30 SECOND DELAY (ADJ.) ON THE SHUT DOWN AND SHALL BE LOCKED OUT FOR A PERIOD OF 5 MINUTES WHERE THE SYSTEM CANNOT BE RESTARTED.
- THE SYSTEM SHALL HAVE REMOTE COMMUNICATION.
- THE DDC SYSTEM SHALL PROVIDE THE FOLLOWING MINIMUM DATA TRENDS:
  - DIFFERENTIAL STATIC PRESSURE
  - DISCHARGE TEMPERATURE
  - OUTSIDE TEMPERATURE
  - FILTER DIFFERENTIAL FOR PREMO FILTERS
  - FILTER DIFFERENTIAL FOR THE HEPA FILTER
  - SUPPLY STATIC PRESSURE
- SYSTEM WILL REMAIN OFF DURING UNOCCUPIED CONDITIONS.
- IT IS RECOMMENDED THAT THE RANGE VENTILATION SYSTEM BE RUN FOR 15 MINUTES AFTER USE OF RANGE BEFORE SHUTTING DOWN THE SYSTEM.

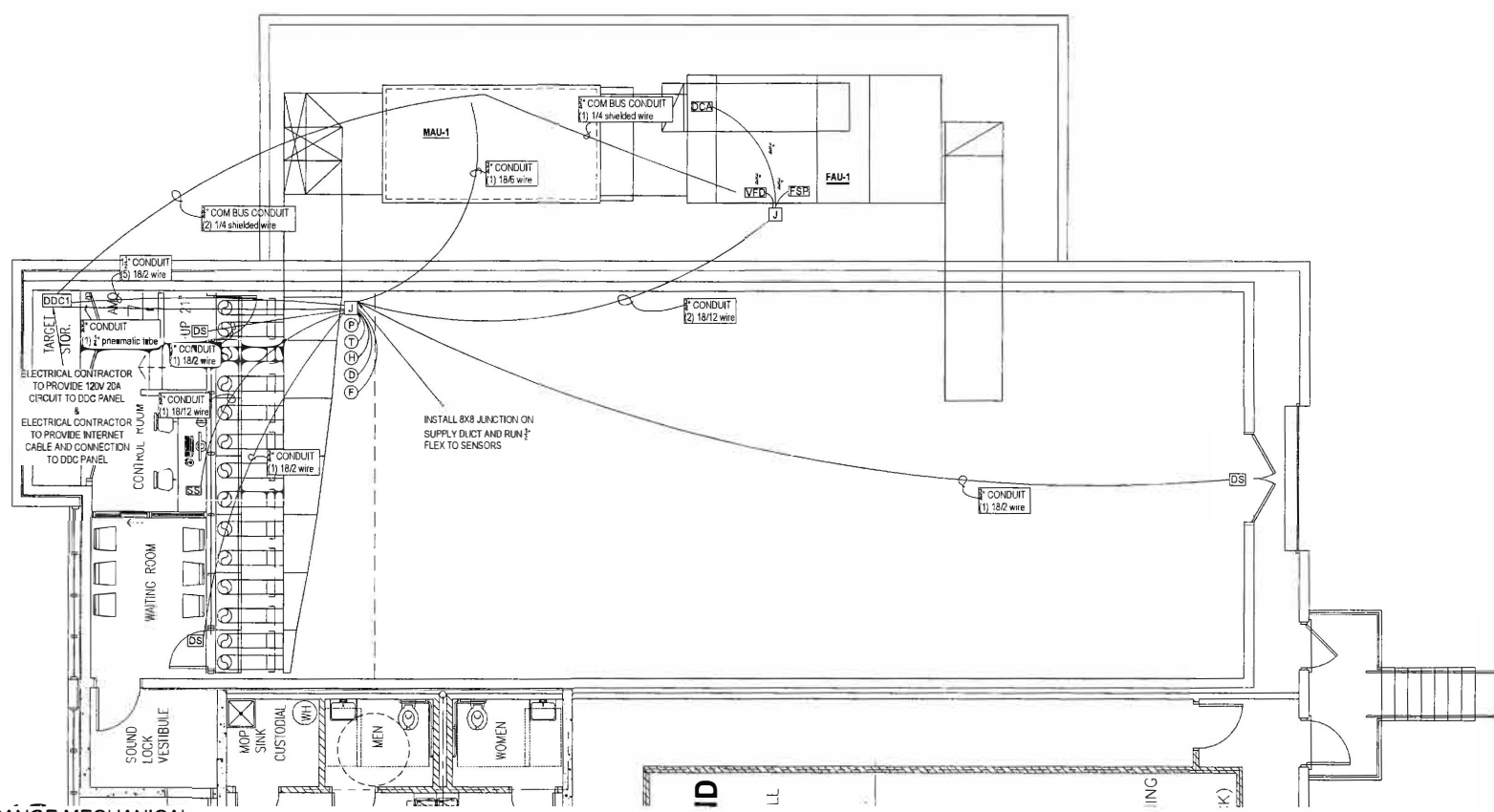
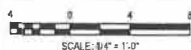
the 1970s, the 1980s, and the 1990s. The 1970s were characterized by a strong emphasis on the environment and social justice. The 1980s saw a shift towards economic growth and individualism. The 1990s were marked by a focus on technology and globalization. These trends have shaped the political and social landscape of the United States and have influenced the development of various policies and programs. The 1970s, for example, saw the passage of the Clean Air Act and the Endangered Species Act, which were landmark pieces of legislation. The 1980s saw the rise of the Reagan Revolution, which emphasized free-market economics and a strong national defense. The 1990s saw the rise of the Clinton administration, which focused on economic recovery and social reform. These trends have continued to shape the United States in the 21st century, with the 2000s and 2010s seeing a renewed focus on the environment and social justice, and the 2020s seeing a renewed focus on economic growth and individualism.

[illegible]



# RANGE MECHANICAL CONTROLS CONDUIT PLAN

SCALE: 1/4" = 1'-0"



INSTALL 8X8 JUNCTION ON  
SUPPLY DUCT AND RUN 1/2"  
FLEX TO SENSORS

## DRAWING NOTES:

- REFER TO RM-700 FOR GENERAL CONTROL NOTES, SYMBOLS, AND SPECIFICATIONS.
- CONDUIT DRAWINGS ARE FOR DIAGRAMMATIC PURPOSES ONLY. INSTALLING CONTRACTOR TO DETERMINE FINAL PATHWAYS FOR CONDUITS.
- ALL CONDUITS SHALL BE RUN ABOVE GROUND
- ALL DOORS LEADING INTO A RANGE SPACE WHETHER SHOWN OR NOT SHALL HAVE A 3" CONDUIT RUN TO IT FROM THE NEAREST CONTROLS JUNCTION WITH 18/2 WIRE FOR A MAGNETIC DOOR SWITCH.
- FINAL INDOOR LOCATION OF DDC PANEL TO BE DETERMINED BY ELECTRICAL CONTRACTOR
- FINAL LOCATION OF REMOTE START/STOP/ALARM STATION TO BE DETERMINED BY OWNER
- COMMUNICATION BUS WIRE SHALL BE RUN IN DEDICATED CONDUIT - NO EXCEPTIONS

THE SEAL AND SIGNATURE ARE APPLICABLE ONLY TO THE  
DESIGN PROFESSIONAL'S RESPONSIBILITY AND NOT TO THE  
CONTRACTOR'S RESPONSIBILITY. THE CONTRACTOR SHALL  
BE RESPONSIBLE FOR THE ACCURACY OF THE INFORMATION  
AND DATA PROVIDED TO THE DESIGN PROFESSIONAL.  
NO PART OF THIS DOCUMENT SHALL BE REPRODUCED OR  
TRANSMITTED IN ANY FORM OR BY ANY MEANS, ELECTRONIC  
OR MECHANICAL, INCLUDING PHOTOCOPYING, RECORDING,  
OR BY ANY INFORMATION STORAGE AND RETRIEVAL SYSTEM,  
WITHOUT THE WRITTEN PERMISSION OF THE DESIGN  
PROFESSIONAL.

MARKER	REVISIONS	DATE

**CAREY'S**  
MECHANICAL & ELECTRICAL  
8201 W. 83RD ST. STE. B P. 788.585.7469  
TINLEY PARK, IL 60467 F. 708.855.2158  
CAREYSCENTRAL.COM

HILLSBOROUGH COUNTY  
SHERIFF'S OFFICE RANGE  
TAMPA, FL

DRAWN	RM-701
CHECKED	
DATE	2017-02-08
JOB NO.	
SHEET	
	RM-701