

**PRINTED**

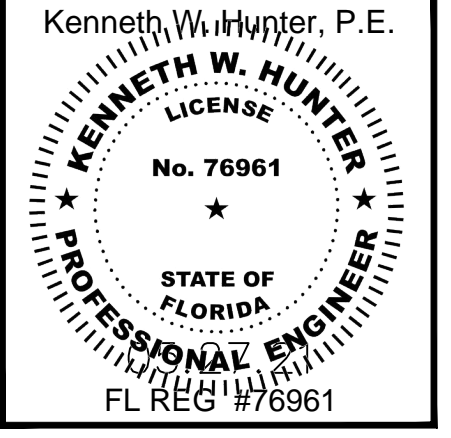
1	05.27.21
2	
3	
4	
5	
6	
7	
8	

**REVISIONS**

1	REVISION 1	08.13.21
2		
3		
4		
5		
6		

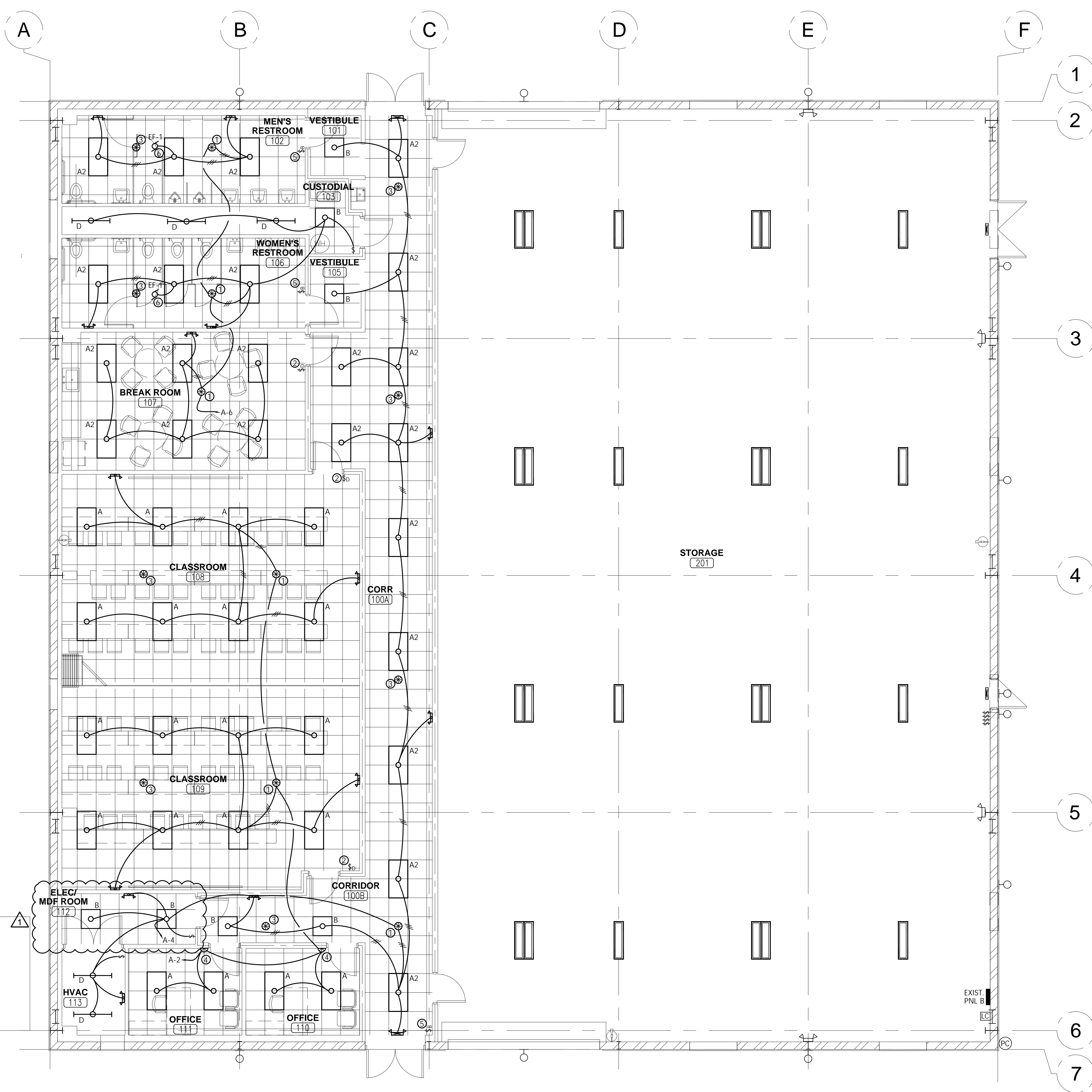
This item has been electronically signed and sealed by Kenneth W. Hunter, P.E. using a Digital signature and date. Printed copies of this document must not be considered signed and sealed and the signature must be verified on any electronic copies.

**HILLSBOROUGH COUNTY**  
**SHERIFF'S OFFICE**  
 Practical Training Site  
 Office & Classroom Renovation  
 in Existing Pavilion



I HEREBY CERTIFY TO THE BEST OF MY KNOWLEDGE THAT THE DRAWINGS AND SPECIFICATIONS COMPLY WITH THE APPLICABLE MINIMUM BUILDING CODES.

**JOB NO :** 21021  
**DRAWN BY :** KAN  
**ISSUE DATE :** 05.26.21  
**SHEET NAME:**  
**NEW WORK LIGHTING PLAN**  
**SHEET NUMBER**  
**E-202**



**LIGHTING CONTROLS NOTES**

- A. LIGHTING CONTROLS SHALL BE PROVIDED IN ACCORDANCE WITH FBC C405.
- B. CONTRACTOR SHALL PROGRAM ALL LIGHTING CONTROL DEVICES AS FOLLOWS:  
 OFFICES & CLASSROOMS - AUTOMATIC-ON OPERATION AT 50% OUTPUT, 20 MINUTE TIME DELAY.  
 CORRIDORS - AUTOMATIC-ON OPERATION AT 100% OUTPUT, 20 MINUTE TIME DELAY.  
 RESTROOMS - AUTOMATIC-ON OPERATION AT 100% OUTPUT, 10 MINUTE TIME DELAY.
- C. EXISTING LIGHTING IN STORAGE AREA TO REMAIN, NO MODIFICATIONS TO EXISTING CONTROLS.

**PLAN NOTES**

- ① PROVIDE CEILING MT, DUAL TECH OCCUPANCY SENSOR EQUAL TO WATTSTOPPER #DT-300 w/ #BZ-250 RELAY PACK.
- ② PROVIDE 0-10V DIMMING WALL SWITCH EQUAL TO WATTSTOPPER MODEL #DCLV2. CONNECT TO RELAY PACK AT MASTER SENSOR PER MANUFACTURER'S INSTRUCTIONS TO PROVIDE MANUAL OPERATION OF RELAY. CONNECT TO 0-10V INPUT OF FIXTURES TO PROVIDE FULL-RANGE DIMMING OPERATION. FIXTURES SHALL ACTIVATE AT 50%.
- ③ PROVIDE CEILING MT, DUAL TECH, SLAVE OCCUPANCY SENSOR EQUAL TO WATTSTOPPER #DT-300. CONNECT TO MASTER SENSOR @ NOTE #1 PER MANUFACTURER'S INSTRUCTIONS.
- ④ PROVIDE WALL MT, DUAL TECH, SINGLE BUTTON OCCUPANCY SENSOR EQUAL TO WATTSTOPPER #DW-100.
- ⑤ PROVIDE 1-BUTTON, LOW VOLTAGE WALL SWITCH EQUAL TO WATTSTOPPER #LVSW-101. CONNECT TO RELAY PACK AT MASTER SENSOR PER MANUFACTURER'S INSTRUCTIONS TO PROVIDE MANUAL OVERRIDE.
- ⑥ RESTROOM EXHAUST FAN TO BE INTERLOCKED WITH RESTROOM LIGHTING CONTROLS. COORDINATE WITH MECHANICAL.

**GENERAL NOTES**

- 1. THIS PROJECT SHALL BE GOVERNED BY AND SHALL ADHERE TO THE FOLLOWING CODES AND STANDARDS:  
 - FLORIDA BUILDING CODE 7TH EDITION (2020)  
 - NATIONAL ELECTRICAL CODE NFPA 70 (2017)  
 - LIFE SAFETY CODE NFPA 101 (2018 FLORIDA)
- 2. ALL DEVICES/EQUIPMENT SHALL BE LISTED/LABELLED/CERTIFIED BY UL OR AN EQUIVALENT ACCREDITED TESTING LABORATORY.
- 3. ALL WIRING SHALL BE COPPER THHW/THWN, UNLESS NOTED OTHERWISE.
- 4. ARCHITECT TO SELECT FINISHES OF ALL FIXTURES & DEVICES.
- 5. CONTRACTOR SHALL VERIFY EXISTING CONDITIONS & COORDINATE MODIFICATIONS w/ OWNER'S REPRESENTATIVE.
- 6. BYPASS LIGHTING CONTROLS WITH UNSWITCHED LEG FOR EMERGENCY LIGHTING UNITS AS REQUIRED.

**1 NEW WORK LIGHTING PLAN**  
 SCALE: 3/16" = 1'-0"

Dwg Name: 21020 ELECTRICAL R1 090621.dwg [Model] - Printed on: Sep 08, 2021 - 5:11PM by Kan